



Trust in Learning
Trust in Success



TRUST IN LEARNING (ACADEMIES)

SAFEGUARDING AND CHILD PROTECTION POLICY 2023-24



Date Created: August 2016
 Effective From: October 2016
 Dated Adopted by the Board: September 2021
 Review Date: September 2024

Date	Page	Change	Purpose of Change
01/09/2020		Updated and re-written to reflect Covid-19, new statutory guidance Keeping Children Safe in Education, and for ease of reading	
01/02/2021		Updated and re-written to reflect new statutory guidance issued in 2021	
01/09/2022		Updated and re-written to reflect new statutory guidance issued in 2022	
01/09/2023		Updated and re-written to reflect new statutory guidance issued in 2023	

Contents

Part 1: Policy

1.1	Definitions	3
1.2	Introduction	3
1.3	Equalities Statement	5
1.4	Overall Aims	5
1.5	Professional expectations, roles and responsibilities	6
1.6	Safeguarding Training for staff	8
1.7	Safeguarding on the curriculum	9
1.8	Safer Recruitment and Safer Working Practice	10
1.9	Key Safeguarding Areas	11

Part 2: Procedures

2.1	Reporting Concerns	12
2.2	Information Sharing	12
2.3	Identifying and monitoring the needs of vulnerable learners.	13
2.4	Multi Agency Working	14
2.5	Suspensions, permanent exclusions and commissioning alternative provisions	14
2.6	Children Missing from Education	15
2.7	Respond to incidents of child on child harm.	16
2.8	Responding to allegations of abuse made against professionals	18
2.9	Mental health and wellbeing.	19
2.10	Online Safety	20

APPENDICES

Appendix A Key Documentation	21
Appendix B Reporting Concerns	21
Appendix C Dealing with a Disclosure of Abuse	27
Appendix D Types of Abuse and Neglect	27
Appendix E Specific actions to take on topical safeguarding issues	29
Appendix F Flow Chart for Raising Safeguarding Concerns about a Child	

PART 1: Policy

1.1 Definitions

Safeguarding is defined as:

- Protecting children from maltreatment;
- Preventing impairment of children’s mental and physical health or development.
- Ensuring that children grow up in circumstances consistent with the provision of safe and effective care.
- And taking action to enable all children to have the best outcomes.

Child Protection is defined in the Children Act 1989 (s.47) as when a child is suffering or is likely to suffer significant harm. Under statutory guidance and legislation action must be taken to safeguard and promote the child’s welfare.

1.2 Introduction

At Trust in Learning Academies we are committed to safeguarding children and young people and we expect everyone who works in our school to share this commitment.

Adults in our school take all welfare concerns seriously and encourage children and young people to talk to us about anything that worries them.

We will always act in the best interest of the child.

At Trust in Learning Academies

- Safeguarding and promoting the welfare of children is **everyone’s** responsibility. **Everyone** who comes into contact with children, their families and carers, has a role to play.
- In order to fulfil this responsibility effectively, all professionals should make sure their approach is child-centred. This means that they should always consider what is in the **best interests** of the child.
- We take an **‘it can happen here’** approach where safeguarding is concerned.
- **Everyone** who comes into contact with children has a role to play in identifying concerns, sharing information and taking prompt action.
- Victims of harm should **never** be given the impression that they are creating a problem by reporting abuse, sexual violence, or sexual harassment. Nor should a victim ever be made to feel ashamed for making a report.

Trust in Learning Academies is committed to safeguarding and promoting the welfare of children by:

- The provision of a safe environment in which children and young people can learn.
- Acting on concerns about a child’s welfare immediately.
- Fulfilling our legal responsibilities to identify children who may need early help assessment or who are suffering, or are likely to suffer, significant harm.

Where there are concerns about the way that safeguarding is carried out in the school, staff should refer to the Whistle-blowing Policy.

A whistleblowing disclosure must be about something that affects the general public such as:

- a criminal offence has been committed, is being committed or is likely to be committed
- an legal obligation has been breached
- there has been a miscarriage of justice
- the health or safety of any individual has been endangered
- the environment has been damaged
- information about any of the above has been concealed.

The NSPCC runs a whistleblowing helpline on behalf of the government, the number is 0808 800 5000.

All action taken by **Trust in Learning Academies** will be in accordance with:

- **Current legislation** (these are summarised within [Working Together to Safeguard Children: statutory framework](#))
- **Statutory, national, and local guidance – this includes:**
 - **Working Together to Safeguard Children (2018)**, which sets out the multiagency working arrangements to safeguard and promote the welfare of children and young people and protect them from harm; in addition, it sets out the statutory roles and responsibilities of schools.
 - **Keeping Children Safe in Education (2023)** is statutory guidance issued by the Department for Education which all schools and colleges must have regard to when carrying out their duties to safeguard and promote the welfare of children.
 - **Early Years Foundation Stage statutory framework (2021)** is statutory guidance which sets standards that school and childcare providers must meet for the learning, development, and care of children from birth to 5.
- **Local Guidance from the Local Safeguarding Partnership:** around particular safeguarding topics are available on the [Keeping Bristol Safe Partnership Website](#).
- **Specific topical safeguarding issues** – a collection of up-to-date guidance can be found on the Safeguarding in Education Team’s guidance page.
<https://www.bristolsafeguardingineducation.org/guidance/>

This policy should be read in conjunction with the following policies:

- Recruitment and Selection
- Whistleblowing and Public Interest Disclosure
- Code of Conduct for Staff/ Staff Behaviour Policy
- Behaviour Policy
- Exclusions Policy
- Online Safety
- Self-Harm
- Policy on Supporting Children in Care

- Attendance Policy
- Child on Child
- Prevent Duty
- Health and Safety Policy

Head teachers/principals should ensure that the above policies and procedures, adopted by governing bodies and proprietors, are accessible, understood and followed by all staff.

1.3 Equalities Statement

With regards to safeguarding we will consider our duties under the [Equality Act 2010](#) and our general and specific duties under the [Public Sector Equality Duty](#). General duties include:

1. Eliminate discrimination, harassment, victimisation, and other conduct that is prohibited by the Equality Act 2010.
2. Advance equality of opportunity between people who share a protected characteristic and people who do not share it.
3. Foster good relations across all protected characteristics between people who share a protected characteristic and people who do not share it.

Details of our specific duties are published under **Trust in Learning Academies** equality statement and measurable objectives. **These are available on our website**

We adhere to both the [Bristol Equality Charter](#) and [Bristol Children's Charter](#) with a view to contribute towards the [One City Plan](#).

Staff are aware of the additional barriers to recognising abuse and neglect in children with Special Educational Needs and Disabilities (SEND). This will be in line with each schools Special Educational Needs and Disability Policy and practice which can be found on each schools websites.

[Orchard School Bristol](#)

[Filton Avenue Primary School](#)

[Bridge Learning Campus](#)

[Parson Street Primary School](#)

[Charlton Wood Primary Academy](#)

[Fonthill Primary Academy](#)

[Henbury Court Primary Academy](#)

[Little Mead Primary Academy](#)

Trust in Learning (Academies) also adheres to the principals of and promotes anti-oppressive practice in line of the [United Nations Convention of the Rights of the Child](#) and the [Human Rights Act 1998](#).

1.4 Overall Aims

This policy will contribute to the safeguarding of children at **Trust in Learning Academies** by:

- Clarifying safeguarding expectations for members of the education setting's community, staff, governing body, learners, and their families.

- Contributing to the establishment of a safe, resilient, and robust safeguarding culture in the setting built on shared values; that learners are treated with respect and dignity, taught to treat each other and staff with respect, feel safe, have a voice and are listened to.
- Supporting contextual safeguarding practice recognising that the setting's site can be a location where harm can occur.
- Setting expectations for developing knowledge and skills within the setting's community (staff, learners, parents/carers) to the signs and indicators of safeguarding issues and how to respond to them.
- Early identification of need for vulnerable learners and provision of proportionate interventions to promote their welfare and safety.
- Working in partnership with learners, parents, and other agencies in the Local Safeguarding Partnership.

Trust in Learning Academies is named as a relevant agency in the Local Safeguarding Partnership (Keeping Bristol Safe Partnership). This policy sets out its statutory duty to co-operate, follow and comply with published arrangements as set out by the Keeping Bristol Safe Partnership.

1.5 Professional expectations, roles, and responsibilities

1.5.1 Role of all staff

- All staff will read and understand Part 1 of statutory guidance Keeping Children Safe in Education (2023). Those working directly with children will also read Annex B. Those who do not work directly with children will have the option of reading Annex A instead
- In addition to this all staff will be aware of the systems in place which support safeguarding including reading this Safeguarding/Child Protection Policy; the Behaviour Policy; the Staff Behaviour Policy (code of conduct); safeguarding response to children who go missing from education; and the role of the Designated Safeguarding Lead (DSL).
- Know who and how to contact the DSL and any deputies, the Chair of Local Governors and the Local Governor responsible for safeguarding (where appropriate) along with the Trust Board Member responsible for Safeguarding.
- All staff will be able to identify vulnerable learners and take action to keep them safe. Information or concerns about learners will be shared with the DSL where it includes those:
 - who may need a social worker and may be experiencing abuse or neglect;
 - requiring mental health support;
 - may benefit from early help;
 - where there is a radicalisation concern;
 - where a crime may have been committed.
- Be clear as to the setting's policy and procedures about [child on child abuse](#), children missing education and [those requiring mental health support](#), and the [impact of technology in relation to online safety](#).
- Be involved where appropriate, in the implementation of individual plans to further safeguard vulnerable learners and understand their academic progress and attainment and maintain a culture of high aspirations for this cohort.
- Record concerns appropriately and in a timely manner by using the setting's safeguarding systems.
- To be aware of the need to raise to the senior leadership team any concerns they have about safeguarding practices within the school.

1.5.2 - Role of the Designated Safeguarding Lead (DSL)

Duties are further outlined in Keeping Children Safe in Education (2023, Annex C)

Details of our DSL and Deputy DSL are available on each schools website, in their newsletters, and/ or the notice boards.

- The DSL is a senior member of staff who undertakes lead responsibility for safeguarding and child protection within the setting.
- The DSL works with the headteacher, and relevant strategic leads, taking lead responsibility for promoting educational outcomes by knowing the welfare, safeguarding and child protection issues that learners in need are experiencing or have experienced, and identifying the impact that these issues might be having on learner's attendance, engagement and achievement at school or college.
- Activities include the management of work undertaken by any Deputy DSLs.
- Manages early identification of vulnerability of learners and their families from staff through cause for concerns or notifications. This will ensure detailed, accurate, secure written records of concerns and referrals.
- Manages referrals to local safeguarding partners where learners with additional needs have been identified. These can include those –
 - who need a social worker and may be experiencing abuse or neglect;
 - requiring mental health support;
 - who may benefit from early help;
 - where there is a radicalisation concern;
 - where a crime may have been committed.

The DSL will also:

- Work with others – acting as a point of contact for outside agencies about safeguarding.
- Support and advise other staff in making referrals to other agencies.
- When required, liaise with the case manager and the Local Authority Designated Officer (LADO) in relation to child protection cases which concern a staff member.
- Coordinate safeguarding training and raise awareness and understanding to the school community around policies and practice in relation to safeguarding.
- Help promote educational outcomes by sharing information about vulnerable learners with relevant staff. This includes ensuring that staff:
 - know who these children are,
 - understand their academic progress and attainment and maintain a culture of high aspirations for this cohort.
 - Are supported to identify the challenges that children in this group might face.
 - Provide additional academic support or make reasonable adjustments to help children who have **or have had** a social worker to reach their potential.
- Ensure the successful transfer of the Safeguarding/Child Protection File when a learner moves on to a new setting within 5 days for in year transfer or the first 5 days of the start of a new term.
- Ensure appropriate safeguarding cover and availability during term time/ any out of hours/out of term activities managed by the school.
- manage referrals from school staff or any others from outside the school;

- work with external agencies and professionals on matter of safety and safeguarding;
- undertake training;
- raise awareness of safeguarding and child protection amongst the staff and parents; and
- ensure that child protection information is transferred to the pupil's new school
- be aware of pupils who have a social worker*
- be responsible for the implementation and maintaining of the filtering and monitoring standards as introduced in KCSIE 2023.
- help promote educational outcomes by sharing the information about the welfare, safeguarding and child protection issues with teachers and school and college leadership staff.

If the DSL is not available, staff should speak to a member of the SLT and/or take advice from local children's social care (KCSIE (2023), paragraph 59)

1.5.3 - Role of the Trust's Board

Duties are further outlined in Keeping Children Safe in Education (2023, Part 2)

There is a senior board level lead who takes responsibility for the Trust's safeguarding responsibility to ensure that safeguarding and child protection practice, process, and policy (including online safety) is effective and is compliant with legislation, statutory guidance, and Local Safeguarding Partnership arrangements.

- The appointed Safeguarding Trustee will liaise with the Head Teacher/Principal and the DSL to produce an annual report for governors and ensure completion of the S. 175 (annual safeguarding) audit for the Keeping Bristol Safe Partnership;
- Ensure that the school remedies any deficiencies or weaknesses brought to its attention without delay;
- Ensure that this document is updated annually (or when there are significant updates)
- Ensure that the DSL of all schools is an appropriate senior member of the schools senior leadership team and ensure that they have adequate time, funding, training, resources, and support to carry out their role effectively.
- Ensure that the training and learning for the school community is robust and effective.
- Ensure that learners are taught about safeguarding on the curriculum including online safety in compliance with statutory guidance [Relationships and sex education \(RSE\) and health education - GOV.UK \(www.gov.uk\)](https://www.gov.uk/government/guidance/relationships-and-sex-education-rse-and-health-education) and [Early years foundation stage \(EYFS\) statutory framework - GOV.UK \(www.gov.uk\)](https://www.gov.uk/government/guidance/early-years-foundation-stage-e-yfs-statutory-framework)
- To ensure that teachers, including supply teachers, other staff, volunteers, and contractors have appropriate checks carried out in line with statutory guidance Keeping Children Safe In Education (2023, Part 3).
- Ensure that there are procedures in place to manage safeguarding concerns or allegations against teachers, including supply teachers, other staff, volunteers, and contractors who may not be suitable to work with or pose a risk to learners, this includes having a process to manage low level concerns.
- Ensure that systems are in place for learners to effectively share a concern about a safeguarding issue they are experiencing, express their views and give feedback.
- Ensure that the setting has systems in place to prevent, identify and respond to child on child harm (including sexual abuse and sexual harassment) and mental health concerns, and review the effectiveness of the setting's online safety practices.
- Appoint a designated teacher to promote the educational achievement for children in care and other care arrangements.

1.6 Safeguarding training for staff

1.6.1 - All staff:

- The Trust will ensure that all staff members undergo safeguarding and child protection (including online safety) training at induction. This is mandatory and will include
 - the child protection policy;
 - the behaviour policy;
 - the staff behaviour policy (sometimes called a code of conduct);
 - the safeguarding response to children who go missing from education; and
 - the role of the designated safeguarding lead (including the identity of the designated safeguarding lead and any deputies). (see KCSIE (2023))
- Will receive appropriate safeguarding and child protection (including online safety) refresher training at least on annually (via formal training, email e-bulletins and staff meetings).
- All staff must complete FGM awareness training and will understand their legal duty under the Mandatory Reporting Duty.
- All staff must complete PREVENT awareness training. This is to ensure that they can comply with the legal expectations under the PREVENT duty.
- Staff training includes clear reference to internal whistleblowing policy and guidance for escalating concerns.
- For school within the Trust that have a LGB full safeguarding training will be carried out annually. The Trust board will also complete training annually to ensure that all board members have a sound understanding of safeguarding and can support and challenge effectively.

In addition the Trust board should be aware of their obligations under the Human Rights Act 1998 21, the Equality Act 2010 22 and their local multiagency safeguarding arrangements.

1.6.2 - Designated Safeguarding Lead and deputies:

- Will undergo formal training to provide them with the knowledge and skills (including online safety) training required to carry out the role. The training will be updated every two years.
- Deputies will be trained to the same level as the DSL.
- The DSL and any deputies will liaise with the Local Safeguarding Partnership to ensure that their knowledge and skills are updated via e-bulletins, attend DSL network meetings, and take time to read and digest safeguarding bulletins.

1.6.3 - Other training considerations:

- The Trust body will ensure that at least one person on any appointment panel will have undertaken safer recruitment training, in line School Staffing (England) Regulations 2009.
- Members of the Senior Leadership Team will make themselves aware of and understand their role within the local safeguarding arrangements. This will ensure that those who have responsibility for the management of behaviour, inclusion, Special Educational Needs, attendance, and exclusions will carry out their duties with a safeguarding consideration.

- The Designated Teacher for Children in Care will undergo appropriate training to fulfil their role to promote the educational achievement of registered pupils who are in care.
- The mental health lead has access to appropriate training.
- Training around safeguarding topics in Annex B (including online safety) will be integrated, aligned, and considered as part of a whole school safeguarding approach.
- Appropriate colleagues have received appropriate training in relation to use of reasonable force and positive handling.

1.7 Safeguarding in the curriculum

Trust in Learning Academies is dedicated to ensuring that learners are taught about safeguarding, including online safety. Pupils are taught about safeguarding, including online, through various teaching and learning opportunities, as part of providing a broad and balanced curriculum. Children are taught to recognise when they are at risk and how to get help when they need it. We recognise that a one size fits all approach may not be appropriate for all learners, and a more personalised or contextualised approach for more vulnerable learners, victims of abuse and some SEND children might be needed. This is part of a broad and balanced curriculum.

As stated in KCSIE 2023, Preventative education is most effective in the context of a whole-school or college approach that prepares pupils and students for life in modern Britain and creates a culture of zero tolerance for sexism, misogyny/misandry, homophobia, biphobic and sexual violence/harassment. TiLA has a clear set of values and standards, upheld and demonstrated throughout all aspects of the organisation. These are contextualised in each schools' behaviour policy and pastoral support system, as well as by a planned programme of evidence-based RSHE delivered in regularly timetabled lessons and reinforced throughout the whole curriculum.

These programs tackle at an age-appropriate stages issues such as:

- healthy and respectful relationships
- boundaries and consent
- stereotyping, prejudice and equality
- body confidence and self-esteem
- how to recognise an abusive relationship, including coercive and controlling
- behaviour
- the concepts of, and laws relating to- sexual consent, sexual exploitation, abuse,
- grooming, coercion, harassment, rape, domestic abuse, so called honour-based
- violence such as forced marriage and Female Genital Mutilation (FGM), and how
- to access support, and
- what constitutes sexual harassment and sexual violence and why these are
- always unacceptable.

This includes:

- Working within statutory guidance in respect to [Relationships and sex education \(RSE\) and health education - GOV.UK \(www.gov.uk\)](https://www.gov.uk/government/consultations/relationships-and-sex-education-rse-and-health-education); and [Early years foundation stage \(EYFS\) statutory framework - GOV.UK \(www.gov.uk\)](https://www.gov.uk/government/consultations/early-years-foundation-stage-eyfs-statutory-framework)

- Personal, Social, Health and Economic (PSHE) education, to explore key areas such as self-esteem, emotional literacy, assertiveness, power, building resilience to radicalisation, online safety and bullying.
- Appropriate filters and monitoring systems are in place to ensure that ‘over- blocking’ does not lead to unreasonable restrictions as to what learners can be taught about online teaching and safeguarding.
- The curriculum will be shaped to respond to safeguarding incident patterns in the setting identified by the Designated Safeguarding Lead and safeguarding team (e.g., to respond to an increase in bullying incidents).
- Providing engagement opportunities with parents and carers to consult on key aspects of the curriculum.
- Learners can inform the curriculum via discussions with the school council.

1.8 Safer recruitment and safer working practice

1.8.1 - Safer recruitment

Trust in Learning Academies pays full regard to the safer recruitment practices detailed in ‘Keeping Children Safe in Education’ (2023; Part 3)

- This includes scrutinising applicants, verifying identity and academic or vocational qualifications, obtaining professional and character references, checking previous employment history, and ensuring that a candidate has the health and physical capacity for the job. References are always obtained, scrutinised and concerns resolved satisfactorily before appointment is confirmed.
- It also includes undertaking appropriate checks through the Disclosure and Barring Service (DBS), the barred list checks and prohibition checks (and overseas checks if appropriate), dependent on the role and duties performed, including regulated and non-regulated activity.
- All recruitment materials will include reference to **Trust in Learning Academies** commitment to safeguarding and promoting the wellbeing of learners.
- In line with KCSIE 2023 recommendations the trust will carry out ‘digital screening’ to assess the suitability of shortlisted candidates to work with children. Candidates will be made aware of this on application.

1.8.2 - Use of reasonable force

‘Reasonable force’ refers to the physical contact to restrain and control children using no more force than is needed.’ The use of reasonable force is down to the professional judgement of the staff member concerned and will be determined by individual circumstances and the vulnerability of any child with Special Educational Needs or Disability (SEND) will be considered.

- The use of reasonable force will be minimised through positive and proactive behaviour support and de-escalation and will follow government guidance ([Use of Reasonable Force in Schools 2013](#); [Reducing the need for restraint and restrictive intervention, 2019](#)).
- There is robust recording of any incident where positive handling or restraint has been used. Further review of the incident is carried out to reflect on how the incident could be avoided, this will involve the child and their family.

The process around how the setting manages concerns where a professional may pose a risk to learners and our response to low level concerns can be accessed in section [2.8 Allegations of abuse made against professionals](#).

1.8.3 - Whistleblowing procedures

Staff are aware of the following whistleblowing channels for situations where they feel unable to raise an issue with the senior leadership team or feel that their genuine concerns are not being addressed:

- General guidance can be found at: Advice on whistleblowing <https://www.gov.uk/whistleblowing>.
- The NSPCC whistleblowing helpline is available [here](#) for staff who do not feel able to raise concerns regarding child protection failures internally. Staff can call: 0800 028 0285 – line is available from 8:00 AM to 8:00 PM, Monday to Friday and Email: help@nspcc.org.uk.
- The above channels are clearly accessible to all staff (in the staff handbook, code of conduct and staff notice boards).

1.9 Key safeguarding areas

Each school within Trust in Learning Academies assesses the risks and issues in the wider community when consider the well-being and safety of its pupils. These topics are themes that can impact on children and families. There are specific areas of safeguarding that the setting has statutory responsibilities to address which are hyperlinked:

- Children in the court system
- Children affected by parental offending/imprisonment.
- [Children missing from education](#) – including persistent absence.
- [Child Exploitation](#) (including both Child Sexual Exploitation and Child Criminal Exploitation and county lines, modern day slavery and trafficking)
- Cybercrime
- [Domestic Abuse](#)
- Homelessness
- So-called Honour based Abuse (including Female Genital Mutilation and Forced Marriage),
- [Online Safety](#)
- [Mental health](#)
- [Child on child abuse](#):
 - Bullying (including cyberbullying, prejudice-based and discriminatory bullying).
 - Abuse in intimate personal relationships between peers.
 - Physical abuse such as hitting, kicking, shaking, biting, hair pulling, or otherwise causing physical harm (this may include an online element which facilitates, threatens and/or encourages physical abuse).
 - Sexual violence, such as rape, assault by penetration and sexual assault;(this may include an online element which facilitates, threatens and/or encourages sexual violence).
 - Sexual harassment, such as sexual comments, remarks, jokes and online sexual harassment, which may be standalone or part of a broader pattern of abuse.
 - Causing someone to engage in sexual activity without consent, such as forcing someone to strip, touch themselves sexually, or to engage in sexual activity with a third party.
 - Consensual and non-consensual sharing of nudes and semi-nude images and or videos (also known as sexting or youth produced sexual imagery).
 - Upskirting, which typically involves taking a picture under a person’s clothing without their permission, with the intention of viewing their genitals or buttocks to obtain sexual gratification, or cause the victim humiliation, distress, or alarm; and

- Initiation/hazing type violence and rituals (this could include activities involving harassment, abuse or humiliation used as a way of initiating a person into a group and may also include an online element).

- [Preventing Radicalisation \(The Prevent Duty\)](#)
- [Serious Youth Violence](#)
- Substance Misuse
- [Private Fostering](#)
- [Young Carers](#)

County Lines' is:

County lines is a term used to describe gangs and organised criminal networks involved in exporting illegal drugs (primarily crack cocaine and heroin) into one or more importing areas [within the UK], using dedicated mobile phone lines or other form of "deal line".'

Exploitation is an integral part of the county lines offending model with children and vulnerable adults exploited to move [and store] drugs and money. Offenders will often use coercion, intimidation, violence (including sexual violence) and weapons to ensure compliance of victims.

Children can easily become trapped by this type of exploitation as county lines gangs create drug debts and can threaten serious violence and kidnap towards victims (and their families) if they attempt to leave the county lines network.

See KCSIE (2023) page 142.

Additional information about key safeguarding areas can also be found in Keeping Children Safe in Education (2023; Annex B); the [NSPCC website - Types of Abuse](#);

And for localised resources for education settings [The Bristol Safeguarding in Education website](#).

Mental Health

All staff at Trust in Learning Academies are aware that mental health problems can, in some cases, be an indicator that a child has suffered or is at risk of suffering abuse, neglect or exploitation.

School staff are not expected or trained to diagnose mental health conditions or issues, but may notice behaviours that may be of concern.

If staff have a mental health concern about a child that is also a safeguarding concern, immediate action should be taken by speaking to the designated safeguarding lead or a deputy.

Female Genital Mutilation

The Serious Crime Act 2015 sets out a duty on professionals (including teachers) to notify police when they discover that FGM appears to have been carried out on a girl under 18. In schools, this will usually come from a disclosure (unlike in the medical profession where an observation may have been made).

Teachers must personally report to the police cases where they discover that an act of FGM appears to have been carried out; and discuss any such cases with the safeguarding lead and children's social care. The duty does not apply in relation to at risk or suspected cases.

Children with Special Educational Needs or Disabilities (SEND)

Children with special educational needs or disabilities (SEND) or certain health conditions can face additional safeguarding challenges. Trust in Learning Academies will ensure staff understand the fact that additional barriers can exist when recognising abuse and neglect in this group of children.

These can include:

- assumptions that indicators of possible abuse such as behaviour, mood and injury relate to the child's condition without further exploration;
- these children being more prone to peer group isolation or bullying (including prejudice-based bullying) than other children;
- the potential for children with SEND or certain medical conditions being disproportionately impacted by behaviours such as bullying, without outwardly showing any signs; and
- communication barriers and difficulties in managing or reporting these challenges

At Trust in Learning Academies we provide extra pastoral support and attention for these children, along with ensuring any appropriate support for communication is in place.

The schools SEND policy can be found on their website (see page 5)

Serious Violence

Trust in Learning Academies understands that some children are at risk from or are involved with serious violent crime. Staff will be made aware of the indicators which may signal risk and be aware of the range of risk factors which increase the likelihood of involvement in serious violence. Trust in Learning Academies will take advice from the Government's advice to schools and colleges <https://www.gov.uk/government/publications/advice-to-schools-and-colleges-on-gangs-and-youth-violence>

PART 2: Procedures

2.1 Reporting concerns

All staff are clear about recording and reporting concerns to the DSL/DSL deputies in a timely way. In the case a learner is in immediate danger, staff should phone the police.

All staff are aware of and follow the procedures to respond to a concern about a child detailed in [Appendix B](#). This includes responses to child on child harm and learners who present with a mental health need.

At **Trust in Learning Academies** learners can raise their concerns via individual schools' mechanisms, knowing they can talk with trusted adults within the school, and they will be treated seriously.

2.2 Information Sharing

Trust in Learning Academies is committed to have due regard to relevant data protection principles which allow for sharing (and withholding) personal information as provided for in the Data protection Act 2018 and UK General Data Protection Regulations. This includes how to store and share information for safeguarding purposes, including information which is sensitive and personal and should be treated as 'special category personal data'.

Staff at all schools are aware that:

- 'Safeguarding' and 'individuals at risk' is a processing condition that allows practitioners to share special category personal data.
- Practitioners will seek consent to share data where possible in line with [Information Sharing for Safeguarding Practitioners 2018](#).
- DSLs will adhere to the KCSIE 2023 timeframe of 5 working days to transfer child protection files to new establishments either as transition or in year transfers.

There may be times when it is necessary to share information without consent such as:

- To gain consent would place the child at risk,
- by doing so will compromise a criminal investigation,
- It cannot be reasonably expected that a practitioner gains consent,
- or, if by sharing information it will enhance the safeguarding of a child in a timely manner, but it is not possible to gain consent.

There are also times when Trust in Learning Academies will not provide pupil's personal data where the serious harm test under legislation is met, (by sharing the information the child may be at further risk). When in doubt Trust in Learning Academies will seek legal advice.

The Data Protection Act 2018 and UK GDPR do not prevent the sharing of information for the purposes of keeping children safe. Fears about sharing information must not be allowed to stand in the way of the need to safeguard and promote the welfare and protect the safety of children.

2.3 Identifying and monitoring the needs of vulnerable learners.

The DSL and Deputy DSL will regularly review and monitor those students who have been identified as vulnerable. This can include reviewing attendance data, behaviour data, attainment data and safeguarding records. This is to ensure that:

- Proportionate and early interventions can be taken to promote the safety and welfare of the child and prevent escalation of harm.
- Information about vulnerable learners is shared with teachers and school and college leadership staff to promote educational outcomes.
- Learners who currently have, or have had, a social worker will have their academic progress and attainment reviewed and additional academic support will be provided to help them reach their full potential.
- Reasonable adjustments are made in relation to school-based interventions – for example responding to behaviour.

2.4 Multi-agency working

Trust in Learning Academies and its individual schools are relevant agencies in the Keeping Bristol Safe Partnership and will work together with appropriate agencies to safeguard and promote the welfare of children including identifying and responding to their needs. This is in compliance with statutory guidance [Working Together to Safeguard Children 2018](#).

Occasions that warrant a statutory assessment under the Children Act 1989:

- If the child is in need under s.17 of the Children Act 1989 (including when a child is a young carer and or subject to a private fostering arrangement).
- Or if the child needs protection under s.47 of the Children Act 1989 where they are experiencing significant harm, or likely to experience significant harm.

Referrals in these cases should be made by the DSL (or Deputy DSLs) to Children's Social Care in the local authority in which that child resides. The list of safeguarding contact and other key agencies are listed in [Appendix B](#).

Where the child already has a social worker, the request for service should go immediately to the social worker involved or, in their absence, to their team manager. If the child is a child in care, notification should also be made to the Hope Virtual School.

Trust in Learning Academies and its individual schools will co-operate with any statutory safeguarding assessments conducted by children's social care: this includes ensuring representation at appropriate inter-agency meetings such as integrated support plan meetings initial and review child protection conferences and core group meetings.

2.4.1 Additional considerations:

- Where a learner and/or their family is subject to an inter-agency child protection plan or a multiagency risk assessment conference (MARAC) meeting, the setting will contribute to the preparation, implementation, and review of the plan as appropriate.
- In situations where a child in care may be put on to part time timetable, the school will consult with the Hope Virtual School following local procedures. [GUIDANCE ON THE FIXED TERM & PERMANENT EXCLUSION OF CHILDREN IN CARE FROM SCHOOLS & PRUS \(bristol.gov.uk\)](#)

- If a crime has been suspected or committed that involved the bringing of an offensive weapon on to the school site, the setting will liaise with the Local Authority Violence Reduction Unit (Safer Options) who will consider a proportionate response.
- If there is a risk of harm, the police should be called via 999. For other concerns of criminality, the non-statutory guidance [‘When to Call the Police’ from the NCPCC](#) can be helpful or contact the local PCSO/School Police Beat Officer/School Officer.
- If a learner should be required to take part in a police investigation, it will be the role of the DSL to liaise with the Headteacher to ensure an appropriate adult is present. (This is in line with annex C of KCSIE 2023 and section 47 of the Children act)
- In the rare event that a child death occurs, or a child is seriously harmed **Trust in Learning Academies and its individual schools** will notify the Keeping Bristol Safe Partnership as soon as is reasonably possible.

2.5 Suspensions, permanent exclusions, and commissioning of Alternative Provisions

- (To be read in conjunction with the Behaviour Policy)

When the setting is considering suspending or permanently excluding a learner where additional vulnerability is identified it is important that the learner’s welfare is a paramount consideration. The head teacher will consider their legal duty of care when sending a learner home.

Trust in Learning Academies and its individual schools will exercise their legal duties in relation to their interventions. This includes:

- whether a statutory assessment should be considered in line with the principles of [Children Act 1989](#),
- that decisions are made in an anti-discriminatory manner in line with the [Equality Act 2010](#) (including having regard to the [SEND Code of Practice](#))
- and takes into consideration the learner’s rights under the [Human Rights Act 1998](#).
- Interventions will be consistent with statutory guidance [School suspensions and permanent exclusions - GOV.UK \(www.gov.uk\)](#)

2.5.1 - Actions to take

- An assessment of need should be undertaken with multi-agency partners with a view to mitigate any identified risk of harm this in line with [2.3 Identifying and monitoring the needs of vulnerable learners](#).
- If the child is subject to a child protection plan or where there is an existing child protection file, we will call a multiagency risk-assessment meeting prior to making the decision to exclude.
- In the event of a one-off serious incident resulting in an immediate decision to exclude, the risk assessment *must* be completed prior to convening a meeting of the governing body.

2.5.2 - Commissioning Alternative Provisions

In the event where a school commissions an Alternative Provision they will follow the [Alternative Learning Provision - bristol.gov.uk](#) and follow local guidance [Commissioning Alternative Learning Provision – Advice for schools, Commissioners, and Alternative Providers \(2019\)](#) to ensure clear agreement of roles and responsibilities to maintain safeguarding arrangements for learners who are not taught on site.

The school will continue to be responsible for the safeguarding of that learner and will make necessary checks on the provider to meet the needs of the learner. Written confirmation from the Alternative provider will be obtained of the checks on staff that we would otherwise perform for our own staff.

2.6 Absent from School (To be read in conjunction with the Attendance Policy)

A learner absent from school is a potential indicator of abuse or neglect, or maybe an indicator of need for early help support. Staff should follow procedures for unauthorised absence and for dealing with children that go missing from education, particularly on repeat occasions. These should be reported to the DSL and reviewed in line with [2.3 Identifying and monitoring the needs of vulnerable learners](#).

Trust in Learning Academies and its individual schools will follow the guidance detailed in [Children Missing Education \(2016\)](#) and [Bristol City Council Education Welfare Service – Children Missing Education](#)

This will include notifying the local authority in which the child lives:

- of any pupil who fails to attend school regularly,
- or has been absent without the school's permission for a continuous period of 10 school days or more, at such intervals as are agreed between the school and the local authority.

Knowing where children are during school hours is an extremely important aspect of Safeguarding. Missing school can be an indicator of abuse and neglect and may also raise concerns about others safeguarding issues, including the criminal exploitation of children.

We monitor attendance carefully and address poor or irregular attendance without delay.

We will always follow up with parents/carers when pupils are not at school. This means we need to have a least two up to date contacts numbers for parents/carers. Parents should remember to update the school as soon as possible if the numbers change.

In response to the guidance in Keeping Children Safe in Education (2023) the school has:

1. Staff who understand what to do when children do not attend regularly
2. Appropriate policies, procedures and responses for pupils who go missing from education (especially on repeat occasions).
3. Staff who know the signs and triggers for travelling to conflict zones, FGM and forced marriage.
4. Procedures to inform the local authority when we plan to take pupils off-roll when they:
 - a. leave school to be home educated
 - b. move away from the school's location
 - c. remain medically unfit beyond compulsory school age
 - d. are in custody for four months or more (and will not return to school afterwards); or
 - e. are permanently excluded

We will ensure that pupils who are expected to attend the school but fail to take up the place will be referred to the local authority.

When a pupil leaves the school, we will record the name of the pupil's new school and their expected start date.

2.6.1 - Elective Home Education

The school will notify the Local Authority of every learner where a parent has exercised their right to educate their child at home. Safeguarding files should be shared with the Local Authority Elective Home Education service and consideration of whether additional support from children's social care should be made in line with the Children Act 1989.

2.7 Respond to incidents of child on child harm.

(There is flow diagram in [Appendix B](#) that illustrates this section)

All staff should recognise that children can abuse their peers (including online). It is important that incidents of abuse and harm are treated under safeguarding policy in conjunction with the behaviour policy. However, concerns regarding the welfare of learners requires process and records to be kept on the child's safeguarding/child protection file.

Trust in Learning Academies will ensure that all its schools have

- procedures to minimise the risk of child-on-child abuse;
- the systems in place (and they should be well promoted, easily understood and easily accessible) for children to confidently report abuse, knowing their concerns will be treated seriously;
- how allegations of child-on-child abuse will be recorded, investigated and dealt with;
- clear processes as to how victims, perpetrators and any other children affected by peer-on-peer abuse will be supported;
- a recognition that even if there are no reported cases of child-on-child abuse, such abuse may still be taking place and is simply not being reported;
- a statement which makes clear there should be a zero-tolerance approach to abuse, and it should never be passed off, for example, as "banter", as this can lead to a culture of unacceptable behaviours and an unsafe environment for children;
- recognition that it is more likely that girls will be victims and boys' perpetrators, but that all peer-on-peer abuse is unacceptable and will be taken seriously; and
- the different forms child on child abuse can take, such as:
 - bullying (including cyberbullying, prejudice-based and discriminatory bullying);
 - abuse in intimate personal relationships between peers;
 - physical abuse which can include hitting, kicking, shaking, biting, hair pulling, or otherwise causing physical harm;
 - sexual violence and sexual harassment.

KCSIE 2023 Part 5 sets out how schools and colleges should respond to reports of sexual violence and sexual harassment.

Sharing nudes and semi-nudes (previously known as 'sexting')

In cases where nudes or semi-nudes have been shared, we follow guidance given to schools and colleges by the UK Council for Internet Safety (UKCIS): Sharing nudes and semi-nudes (December 2020)

Further examples of child on child harm this can be found under section [1.9 Key Safeguarding Areas](#). It is recognised that child on child abuse can happen inside and outside of school/college or online.

At Trust in Learning Academies

- We have a ‘zero tolerance’ approach to abuse. Incidents are taken seriously. These will never be tolerated or passed off as ‘banter,’ just having a laugh’ or ‘part of growing up.’ Banter and teasing can and should be acknowledged and recognised as bullying behaviour and may require proportionate intervention.
- Even with a zero-tolerance approach, we take steps to educate and take action ensure to mitigate the risk of contributing to a culture of unacceptable behaviours or a culture that normalises abuse.
- It is understood that child on child harm may reflect equality issues in terms of those who may be targeted are more likely to have protected characteristics.
- Early identification of vulnerability to child on child harm is made by reviewing attendance, behaviour, attainment and safeguarding records at least on a termly basis.

There are clear systems in place (which are well promoted, easily understood and easily accessible) for learners to confidently report abuse knowing their concerns will be treated easily as reflected in section [2.1 Reporting a concern](#) of this policy. Trust in Learning Academies will handle initial reports of harm by:

- Securing the immediate safety of learners involved in an incident and sourcing support for other young people affected.
- Listening carefully to the child, being non-judgmental, being clear about boundaries and how the report will be progressed, not asking leading questions and only prompting the child where necessary with open questions – where, when, what, etc;
- ensuring that victims will never be given the impression that they are creating a problem by reporting abuse, sexual violence, or sexual harassment. They will never be made to feel ashamed for making a report.
- Ensuring the child’s wishes are taken into consideration in any intervention and any action is taken to ensure safety of the target and other members of the wider peer cohort.
- Not promising confidentiality as it is highly likely that information will need to be shared with others.

2.7.1 Actions to take in relation to sexual violence and sexual harassment.

Reference to Keeping Children Safe In Education (2023, Part 5) should be made in relation to taking protective action. Schools will take the following actions when responding to incidents of sexual violence and sexual harassment:

- Incidents will be reported immediately to the DSL/ Deputy DSL who will undertake further assessment of what action should be taken proportionate to the factors that have been identified. [The Brook - Sexual Behaviours Traffic Light Assessment Tool](#) should be utilised to inform assessment of risk and what actions to subsequently take. This may include seeking specialist advice and guidance from [Be Safe](#).
- DSLs/Deputies will take **proportionate** action and consider whether a case can be managed internally, through early help, or should involve other agencies as required in line with the section [2.4 - Multi-Agency Working section](#).
- When an incident involves an act of **sexual violence** (rape, assault by penetration, or sexual assault) the starting point is that this should be passed on to police **regardless** of the age of criminal responsibility (10 years old). This must be reported directly via 101 for recording purposes and accountability. This is on the understanding that the police will take a welfarist approach rather than a criminal justice one. A concurrent referral to social care must also be made. A strategy can be requested where education can voice explicitly concerns of criminalisation in a multi-agency context.

- When the children involved require a statutory assessment either under s.17 or s. 47 of the Children Act 1989 a referral to social care should be undertaken.
- Where the report includes an online element, the setting will follow [Searching, screening and confiscation at school - GOV.UK \(www.gov.uk\)](#) and [Sharing nudes and semi-nudes: advice for education settings working with children and young people - GOV.UK \(www.gov.uk\)](#). The key consideration is for staff not to view or forward illegal images of a child. The highlighted advice provides more details on what to do when viewing an image is unavoidable.
- Risk assessments and or safety plans will be developed for individual children who have been involved in an incident. This should be reviewed every 3 months or every time there is an occurrence of an incident. These should involve the child and parents/carers and address contextual risks.

2.7.2 - Contextual safeguarding approach to child on child harm:

Trust in Learning Academies and its individual schools will minimise the risk of child on child abuse by taking a contextual approach to safeguarding by increasing safety in the contexts of which harm can occur – this can include the school environment itself, peer groups and the neighbourhood.

Following any incidents of child on child harm, the DSL/Deputies will review and consider whether any practice or environmental changes can be made in relation to any lessons learned. This can include making changes to staffing and supervision, making changes to the physical environment and considering the utilisation and delivery of safeguarding topics on the curriculum.

2.8 Responding to allegations of abuse made against professionals.

Allegations or concerns about an adult working in the school whether as a teacher, supply teacher, other staff, volunteers or contractors

At Trust in Learning Academies we recognise the possibility that adults working in our schools may harm children, including governors, local governors, volunteers, supply teachers and agency staff. Any concerns about the conduct of other adults in our schools should be taken to the headteacher without delay; any concerns about the headteacher should go to the Chief Executive who can be contacted by e mail selliot@tila.school

The headteacher/principal has to decide whether the concern is an allegation or low-level concern. The term 'low-level' concern does not mean that it is insignificant, it means that the behaviour towards a child does not meet the threshold for referral to the Local Authority Designated Officer (LADO) (see below).

Staff must report any concerns or allegations about a professional's behaviour (including supply staff, volunteers, and contractors)

It is an allegation if the person* has:

- behaved in a way that has harmed a child, or may have harmed a child and/or;
- possibly committed a criminal offence against or related to a child and/or;
- behaved towards a child or children in a way that indicates he or she may pose a risk of harm to children; and/or
- behaved or may have behaved in a way that indicates they may not be suitable to work with children (also includes behaviour outside the school).

(*Person could be anyone working in the school or a college that provides education for children under 18 years of age, including supply teachers, volunteers and contractors.)

Allegations should be reported to the LADO 'without delay'.

Before contacting the LADO, schools and colleges should conduct basic enquiries in line with local procedures to establish the facts to help them determine whether there is any foundation to the allegation, being careful not to jeopardise any future police investigation.

The LADO's role is not to investigate the allegation, but to ensure that an appropriate investigation is carried out, whether that is by the police, children's social care, the school or college, or a combination of these.

2.8.1 - Immediate action must be taken:

- Do not speak to the individual it concerns.
- Allegations or concerns about colleagues and visitors must be reported directly to the Head Teacher/Principal who will follow guidance in Keeping Children Safe in Education (2023, Part four: Allegations of abuse made against teachers and other staff).
- If the concern relates to Head Teacher/Principal it should be reported to the Chair of Governors, who will liaise with the [Local Authority Designated Officer \(LADO\)](#) and they will decide on any action required.
- If there is a conflict of interest which inhibits this process of reporting, staff can report directly to the LADO.
- If allegations are regarding a member of supply staff, the school will take the lead and progress enquiries with the LADO, whilst continuing to engage and work with the employment agency.
- Allegations regarding foster carers or anyone in a position of trust working or volunteering with children should be referred to the LADO on the day that the allegation is reported. The allocated social worker should also be informed on the day. The school should not undertake any investigation unless the LADO advises this.

2.8.2 - Low level concerns

This should be read in conjunction with the staff code of conduct and Keeping children Safe in Education (2023, Part 4). A low level concern is not insignificant. This process should be used in events where a concern about professional conduct does not meet the threshold set out at the beginning of this section.

- Reports should be made to headteacher/principal. In line with the TiLA Low Level Concern Policy all schools have created an environment where staff are encouraged and feel confident to self-refer where they have found themselves in a situation.
- The DSL will address unprofessional behaviour and support the individual to correct it at an early stage providing a responsive, sensitive, and proportionate handling of such concerns when they are raised.
- Review and correct any deficits in the setting's safeguarding system.

Concerns may be graded Low-level if the concern does not meet the criteria for an allegation; and the person* has acted in a way that is inconsistent with the staff code of conduct, including inappropriate conduct outside of work. Example behaviours include, but are not limited to:

- being over friendly with children;
- having favourites;
- taking photographs of children on their mobile phone;
- engaging with a child on a one-to-one basis in a secluded area or behind a closed door; or,
- using inappropriate sexualised, intimidating or offensive language.

If the concern has been raised via a third party, the headteacher/principal should collect as much evidence as possible by speaking:

- directly to the person who raised the concern, unless it has been raised anonymously;
- to the individual involved and any witnesses.

Reports about supply staff and contractors should be notified to their employers, so any potential patterns of inappropriate behaviour can be identified.

Staff should be encouraged and feel confident to self-refer, where, for example, they have found themselves in a situation which could be misinterpreted, might appear compromising to others, and/or on reflection they believe they have behaved in such a way that they consider falls below the expected professional standards.

Low-level concerns should be recorded in writing, including:

- name* of individual sharing their concerns
- details of the concern
- context in which the concern arose
- action taken

(* if the individual wishes to remain anonymous then that should be respected as far as reasonably possible)

Records must be kept confidential, held securely and comply with the Data Protection Act 2018. Schools and colleges should decide how long they retain such information, but it is recommended that it is kept at least until the individual leaves their employment.

Records should be reviewed so that potential patterns of concerning, problematic or inappropriate behaviour can be identified.

If a concerning pattern of behaviour is identified and now meets the criteria for an allegation, then the matter should be referred to the LADO.

The records' review might identify that there are wider cultural issues within the school or college that enabled the behaviour to occur. This might mean that policies or processes could be revised or extra training delivered to minimise the risk of it happening again.

2.8.3 – Allegations relating to out of hours facilities use

If an allegation relating to an incident that happened when an individual or organisation was using TILA school premises for the purposes of running activities for children (for example community groups, sports associations, or service providers that run extra-curricular activities), the school will follow the above safeguarding procedures, including informing the LADO.

2.9 Mental health and wellbeing.

(A flow diagram is available in [Appendix B](#) to illustrate this section)

Schools and colleges have an important role to play in supporting the mental health and wellbeing of their learners. Mental health problems can, in some cases, be an indicator that a child has suffered or is at risk of suffering abuse, neglect or exploitation, and or may require early help support.

Trust in Learning Academies will commit to undertake the following.

- Early identification of vulnerability to mental health problems by reviewing attendance, behaviour, attainment, and safeguarding records at least on a termly basis.
- Ensure that learners can report and share concerns in line with section [2.1 Reporting a concern](#) of this policy.
- Staff will follow a safeguarding process in terms of reporting concerns outlined in [Appendix B](#) so the DSL/Deputy DSLs (and wider members of the safeguarding team such as the SENDCo) can assess whether there are any other vulnerabilities can be identified and proportionate support considered.
- Staff will ensure the immediate health and safety of a learner who is displaying acute mental health distress. This may require support from emergency services via 999 if the learner is at risk of immediate harm.
- DSLs/Deputies will consider whether a case can be managed internally, through early help, or should involve other agencies as required in line with section [2.4 - Multi-Agency Working](#).
- The setting will communicate and work with the learner and parents/carers to ensure that interventions are in the best interests of the child.
- DSLs will liaise with staff to ensure reasonable adjustments are made and develop ways to support achieving positive educational outcomes.
- Only appropriately trained professionals should attempt to make a diagnosis of a mental health problem – DSLs and the senior leadership team should be able to access specialist advice through targeted services or through their locality [Primary Mental Health Specialists from Child and Family Consultation Services](#).

2.9.1 - Contextual safeguarding approach to mental health

Trust in Learning Academies and its individual schools will ensure that preventative measures in terms of providing safeguarding on the curriculum will provide opportunities for learners to identify when they may need help, and to develop resilience.

The setting will take a 'whole school approach' to:

- deliver high quality teaching around mental health and wellbeing on the curriculum.
- having a culture that promotes mental health and wellbeing;
- having an environment that promotes mental health and wellbeing;
- making sure pupils and staff are aware of and able to access a range of mental health services;
- supporting staff wellbeing
- And being committed to pupil and parent participation

2.10 Online Safety

Online safety is an integrated and interwoven theme with other safeguarding considerations. It is essential that the DSL takes a lead on ensuring that interventions are effective. This means coordinating support and engaging with other colleagues in the setting who may have more technological expertise such as the IT manager.

Trust in Learning Academies is committed to addressing online safety issues around content, contact, conduct and commerce. This includes:

- Ensuring that online safety is concerned in relevant policies and procedures.
- Online safety is interwoven in safeguarding training for staff and safeguarding on the curriculum for learners.

- Acknowledging that child on child abuse can happen via mobile and smart technology between individuals and groups. This should be approached in the same process outlined in section [2.7 Responding to incidents of child on child harm](#) and read in conjunction with the school's policy on the use of mobile smart technology which is available via individual schools website (see page 5)
- The effectiveness of the setting's ability to safeguarding learners in respect to filtering and monitoring, information security and access management alongside the above will be reviewed annually.

Appendix A – Key Guidance for safeguarding issues.

All key education sector policies relevant for education settings can be found on the following webpage <https://www.bristolsafeguardingineducation.org/guidance/>

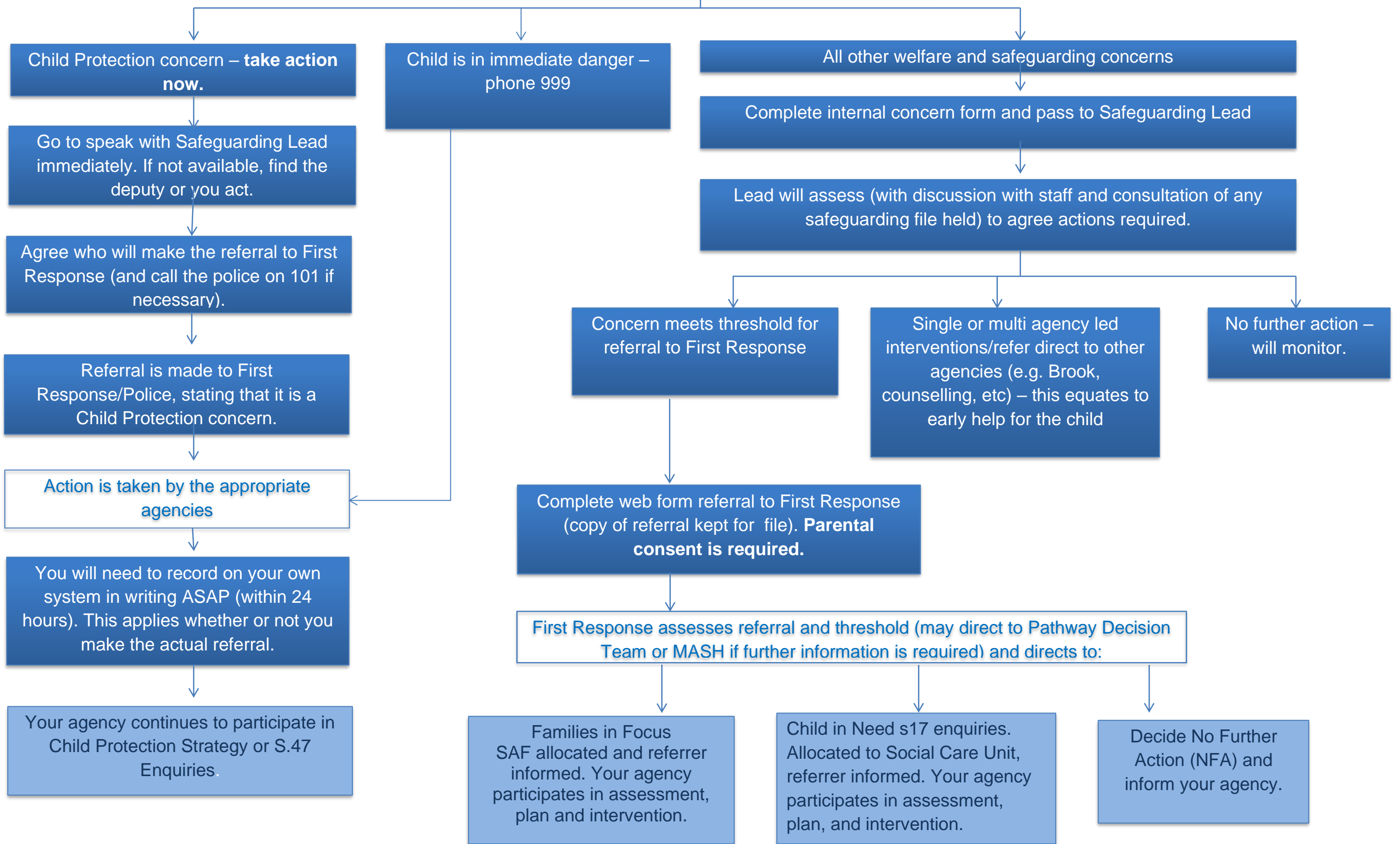
Other **multi-agency** guidance and policies from the Local Safeguarding Partnerships:

- For Bristol - <https://bristolsafeguarding.org/policies-and-guidance/>
- For South Glos - <http://sites.southglos.gov.uk/safeguarding/library>

Appendix B – Reporting concerns

- Reporting Concerns Flow Chart - **Bristol**– [Click here](#)
- Process flow chart responding to incidents of Child on child incidents and Mental Health Problems – [Click here](#)
- Safeguarding contacts Poster – Multi-agency contacts in Bristol. – [Click here](#)
- For wider local contacts use the following page - <https://www.bristolsafeguardingineducation.org/local-contacts/>
- Neighboring Local Authority Contacts - [Click here](#)

You have concerns about a child



No matter what the outcome, keep monitoring, re-refer or escalate as appropriate. Participate in all assessments and plans. Chase referrals if not kept informed – this is our responsibility.

Safeguarding Response to Mental Health and Child on child Abuse

All staff should be aware that mental health problems can, in some cases, be an indicator that a child has suffered or is at risk of suffering abuse, neglect or exploitation (KCSIE, 2021)

All staff should recognise that children are capable of abusing their peers. All staff should be clear about their settings's policy and procedures with regard to child on child abuse (KCSIE, 2021)

There is a concern about a learner's mental health

You are made aware of an incident or pattern of child on child abuse

Only appropriately trained professionals should attempt to make a diagnosis of a mental health problem. Staff however, are well placed to observe children day-to-day and identify those whose behaviour suggests that they may be experiencing a mental health problem or be at risk of developing one. (KCSIE, 2020)

Secure the safety of the learner(s) involved and source support for any other young people affected

Record the concern/incident in line with your setting's safeguarding and child protection policy (e.g on CPOMs). The DSL and deputies are notified

The concern is reviewed by the DSL and safeguarding team. Information should be cross-referenced with attendance, behaviour records, attainment and any safeguarding and child protection concerns.

Possible examples of child on child abuse

- Bullying (and cyberbullying)
- Physical abuse
- Sexual violence and sexual harassment
- Upskirting
- Sexting (youth produced sexual imagery)

Additional guidance used to respond to the concern:

- *Mental health and behaviour in schools* ([link](#))
- *Promoting children and young people's mental health and wellbeing* ([link](#))

Additional guidance used to respond to the concern

- *Advice for Schools and Colleges on Responding to Sexting Incidents* ([link](#))
- *Sexual Behaviours Traffic Light Tool* ([link](#))
- *Preventing and Tackling Bullying* ([link](#))
- *NPCC: When to call the police* ([link](#))

Concern and need reviewed alongside learner and family

Concern can be managed internally through setting-based early help, support and signposting.

Concern requires additional support from a targeted agency or Primary Mental Health Specialist.

Child protection concern that requires a referral to social care for an assessment under s.17 or s.47 of the Children's Act 1989. School may also refer directly to CAMHs.

Concerns managed internally through pastoral support, contextual safeguarding, restorative approaches, RSE/PSHE. Setting informs parents/carers of incident and actions.

Outcomes

Outcomes

Repeat incidents or that of moderate concern – Setting liaises with parents/carers. Consider seeking consent and advice for targeted/specialist services to support all learners involved in the incident(s).

Clear child protection concerns/criminal issue. Make a referral to social care and/or the police for consideration of a statutory assessment.

All actions, risk assessments and responses should be recorded on the Safeguarding/Child Protection file. Plans/risk assessments should be reviewed every 3 months or on any occasion another concern is raised.

Multi-Agency Contacts for Safeguarding in Education.

If you have concerns about a child/young person in Bristol ...

If a child is at immediate risk call the POLICE	POLICE 999	
To make an URGENT referral, i.e., a child is likely to suffer or is suffering significant harm, call children's social care.	FIRST RESPONSE - 0117 9036444	
Out of Hours	EMERGENCY DUTY TEAM - 01454 615 165	
To make a NON-URGENT referral, contact FIRST RESPONSE using the online form (must have parental/carer consent).	FIRST RESPONSE Online form https://www.bristol.gov.uk/social-care-health/make-a-referral-to-first-response	
To raise concerns and ask for advice about radicalisation (also contact First Response).	PREVENT DUTY - 01278 647466 PreventSW@avonandsomerset.police.uk	
To liaise with the specialist Safeguarding Police unit	Lighthouse Safeguarding Unit – Avon and Somerset police 01278 649228	
Families in Focus (Targeted Support) - For advice and guidance about whether to make a referral		
South 0117 9037770	East Central 0117 3576460	North 0117 3521499

If you have concerns about a professional working with a child...

To raise concerns and ask for guidance in relation to the conduct of someone who works with children	Local Authority Designated Officer - (LADO) Nicola Laird T: 0117 9037795
--	---

For information, advice, and guidance in relation to safeguarding policy and procedures.

<u>Safeguarding in Education Team</u>		
T: 0117 9222710		
E: Safeguardingineducationteam@bristol.gov.uk		
South Advisor Helen Macdonald helen.macdonald@bristol.gov.uk	East Central Advisor Jess Curtis jessica.curtis@bristol.gov.uk	North Advisor Sarah Wooding sarah.wooding@bristol.gov.uk



Child sexual exploitation & child criminal exploitation	Operation Topaz (Avon and Somerset Police) https://www.avonandsomerset.police.uk/forms/vul	
Safer Options Team - Education inclusion managers		
South Ingrid.Hooper@bristol.gov.uk	East Central Calum.Paton@bristol.gov.uk	North Ross.Moody@bristol.gov.uk
Child Missing from Education	Bristol City Council – Education Welfare https://www.bristol.gov.uk/schools-learning-early-years/children-missing-education-cme	
Children affected by Forced Marriage	Forced Marriage Unit T: (0) 20 7008 0151 E: fmufco.gov.uk	
Online Safety Advice	Professional Online Safeguarding Helpline T: 0344 381 4772 E: helpline@saferinternet.org.uk	
Reporting online sexual abuse and grooming	Child Exploitation and Online Protection command https://www.ceop.police.uk/ceop-reporting/	
FGM advice	NSPCC FGM Helpline T: 0800 028 3550 E: fgmhelp@nspcc.org.uk	
Domestic Abuse support (Bristol)	Directorate of local and national services https://www.bristol.gov.uk/crime-emergencies/abuse-violence	
Young Carers – advice and support.	Carers Support Centre T: 0117 958 9980 W: https://www.carerssupportcentre.org.uk/young-carers/contact-young-carers/	
Whistleblowing professional policy	NSPCC Whistleblowing hotline T: 0800 028 0285 E: help@nspcc.org.uk	
Mental health Advice (Local)		
Primary Mental Health Specialists (advice) Child and Adolescent Mental Health		
South 0117 3408121	East Central 0117 3408600	North 0117 3546800
Advice around harmful sexualised behaviour.	Be Safe 0117 3408700 W: https://cchp.nhs.uk/cchp/explore-cchp/be-safe	
	Brook Traffic Light Tool https://legacy.brook.org.uk/brook_tools/traffic/index.html?syn_partner=	



Other Local Authorities Contacts

Local Authority in which the child is resident	Contact details	Out of hours/ Weekend
<p>South Gloucestershire</p>	<p>Access and Reponses Team</p> <ul style="list-style-type: none"> • 01454 866000 - Monday to Thursday 9.00 – 5.00, 4.30 on Friday • accessandresponse@southglos.gov.uk <p>Website: Access and Response Teams (ART) South Gloucestershire Council (southglos.gov.uk)</p>	
<p>North Somerset</p>	<p>Single Point of Access</p> <ul style="list-style-type: none"> • 01275 888 808 –Monday-Thursday 8.45am-5pm, Friday 8.45am-4.30pm <p>Website: Children, young people and families North Somerset Council (n-somerset.gov.uk)</p>	<p>Emergency Duty Team</p> <p>01454 615165</p>
<p>Bath and North East Somerset (BANES)</p>	<p>Children’s Social Work Services</p> <ul style="list-style-type: none"> • 01225 396312 or 01225 396313 weekdays, 8.30am to 5pm, except Fridays when we're closed from 4.30pm • ChildCare Duty@bathnes.gov.uk <p>Website: Report a concern about a child Bath and North East Somerset Council (bathnes.gov.uk)</p>	

Appendix C - Dealing with a disclosure of abuse

When a child tells me about abuse they have suffered, what must I remember?

- Stay calm.
- Do not communicate shock, anger or embarrassment.
- Reassure the child. Tell them you are pleased that they are speaking to you.
- Never promise confidentiality. Assure them that you will try to help but let the child know that you may have to tell other people in order to do this. State who this will be and why.
- Encourage the child to talk but do not ask "leading questions" or press for information. Use 'Tell Me, Explain to me, Describe to me' (TED) questioning.
- Listen and remember.
- Check that you have understood correctly what the child is trying to tell you.
- Praise the child for telling you. Communicate that they have a right to be safe and protected.
- It is inappropriate to make any comments about the alleged offender.
- Be aware that the child may retract what they have told you. It is essential to record all you have heard.
- At the end of the conversation, tell the child again who you are going to tell and why that person or those people need to know.
- As soon as you can afterwards, make a detailed record of the conversation using the child's own language. Include any questions you may have asked. Do not add any opinions or interpretations.

NB It is not education staff's role to seek disclosures. Their role is to observe that something may be wrong, ask about it, listen, be available and try to make time to talk.

- The 5 'R's are helpful in understanding what professional's duties are in relation to responding to an incident.

Recognise – Respond – Reassure – Refer - Record

Appendix D - Types of abuse and neglect

The Department for Education's Tackle Child Abuse campaign has accessible videos to watch <https://tacklechildabuse.campaign.gov.uk/>

Abuse and neglect are defined as the maltreatment of a child or young person whereby someone may abuse or neglect a child by inflicting harm, or by failing to prevent harm. They may be abused by an adult or adults or by another child or children.

All school and college staff should be aware that abuse, neglect and safeguarding issues are rarely standalone events that can be covered by one definition or label. In most cases multiple issues will overlap with one another. For children with Special Educational Needs and Disabilities (SEND) additional barriers can exist when identifying abuse and neglect, these include:

- assumptions that indicators of possible abuse such as behaviour, mood and injury relate to the child's disability without further exploration;
- being more prone to peer group isolation than other children;
- the potential for children with SEN and disabilities being disproportionately impacted by behaviours such as bullying, without outwardly showing any signs; and
- communication barriers and difficulties in overcoming these barriers.

To address these additional challenges, schools and colleges should consider extra pastoral support for children with SEND (KCSIE, 2023).

The following are the definition of abuse and neglect as set out in Working Together to Safeguard Children (2018) however, the ultimate responsibility to assess and define the type of abuse a child or young person may be subject to is that of the Police and Children's Services – our responsibility is to understand what each category of abuse is and how this can impact on the welfare and development of our children and where we have concerns that a child or young person may be at risk of abuse and neglect (one or more categories can apply) to take appropriate action as early as possible.

Physical abuse: a form of abuse which may involve hitting, shaking, throwing, poisoning, burning or scalding, drowning, suffocating or otherwise causing physical harm to a child. Physical harm may also be caused when a parent or carer fabricates the symptoms of, or deliberately induces, illness in a child.

Neglect: the persistent failure to meet a child's basic physical and/or psychological needs, likely to result in the serious impairment of the child's health or development. Neglect may occur during pregnancy as a result of maternal substance abuse. Once a child is born, neglect may involve a parent or carer failing to: provide adequate food, clothing and shelter (including exclusion from home or abandonment); protect a child from physical and emotional harm or danger; ensure adequate supervision (including the use of inadequate care-givers); or ensure access to appropriate medical

care or treatment. It may also include neglect of, or unresponsiveness to, a child's basic emotional needs.

Abuse a form of maltreatment of a child. Somebody may abuse or neglect a child by inflicting harm or by failing to act to prevent harm. Harm can include ill treatment that is not physical as well as the impact of witnessing ill treatment of others. This can be particularly relevant, for example, in relation to the impact on children of all forms of domestic abuse. Children may be abused in a family or in an institutional or community setting by those known to them or, more rarely, by others. Abuse can take place wholly online, or technology may be used to facilitate offline abuse. Children may be abused by an adult or adults or by another child or children.

Emotional abuse: the persistent emotional maltreatment of a child such as to cause severe and adverse effects on the child's emotional development. It may involve conveying to a child that they are worthless or unloved, inadequate, or valued only insofar as they meet the needs of another person. It may include not giving the child opportunities to express their views, deliberately silencing them or 'making fun' of what they say or how they communicate. It may feature age or developmentally inappropriate expectations being imposed on children. These may include interactions that are beyond a child's developmental capability as well as overprotection and limitation of exploration and learning, or preventing the child participating in normal social interaction. It may involve seeing or hearing the ill-treatment of another. It may involve serious bullying (including cyberbullying), causing children frequently to feel frightened or in danger, or the exploitation or corruption of children. Some level of emotional abuse is involved in all types of maltreatment of a child, although it may occur alone.

Sexual abuse: involves forcing or enticing a child or young person to take part in sexual activities, not necessarily involving a high level of violence, whether or not the child is aware of what is happening. The activities may involve physical contact, including assault by penetration (for example rape or oral sex) or non-penetrative acts such as masturbation, kissing, rubbing and touching outside of clothing. They may also include non-contact activities, such as involving children in looking at, or in the production of, sexual images, watching sexual activities, encouraging children to behave in sexually inappropriate ways, or grooming a child in preparation for abuse (including via the internet). Sexual abuse is not solely perpetrated by adult males. Women can also commit acts of sexual abuse, as can other children.

Appendix E Specific actions to take on topical safeguarding issues

General or national guidance will not be included here. A summary of specific duties are in Keeping Children Safe in Education 2023 Annex [B](#) and Access to local guidance can be found in [Appendix A](#) of this document.

In recognition that the threshold of child protection is 'likely to suffer' significant harm, Trust in Learning Academies may need to make a referral to children's social care. Where possible, this will involve notifying the parent/carer if it does not place the learner at further risk of harm. In all other circumstances information will be shared in line with section [2.2 Information Sharing](#).

It is also important to recognise the importance of liaising with other education settings who may have siblings attending. It is likely that they may hold additional information which will support early identification of harm and in turn develop your assessment of need.

At Trust in Learning Academies, we recognise that when a child has a social worker, it is an indicator that the child is more at risk than most pupils.

This may mean that they are more vulnerable to further harm, as well as facing educational barriers to attendance, learning, behaviour and poor mental health.

We take these needs into account when making plans to support pupils who have a social worker.

Child Exploitation – both Child Sexual Exploitation (CSE) and Child Criminal Exploitation (CCE)

Trust in Learning Academies will ensure that early help assessment and the subsequent interventions are provided as soon as a concern of exploitation is identified. Discussion and advice will be sought from targeted services to consider what support may be available. The learner and their families will be part of any planning and interventions.

- If the learner is at risk of CSE or there is intelligence which indicates that the learner or peer group are at risk of CSE, Trust in Learning Academies will share information with Operation Topaz (the police). This information will support proactive activity to disrupt criminal activity in relation to sexual exploitation.
- If the learner is at risk of CCE information should be shared with Bristol's Violence Reduction Unit - Safer Options. The Safer Options Education Inclusion Managers can advise and support settings to manage risk. Targeted support maybe available to disrupt learners from getting involved with criminality.
- Avon and Somerset Police share 'Missing persons' notifications (which a learner is reported missing from home or care) with education settings with a view to support them to take proactive action and reasonable adjustments in relation to behaviour management and achieving positive educational outcomes. These should be stored securely on the learner's Safeguarding/Child Protection file.

The statutory definition of Child Sexual Exploitation (CSE) can be found in the guidance document Child sexual exploitation: Definition and a guide for practitioners (DfE 2017)

Child sexual exploitation is a form of child sexual abuse. It occurs where an individual or group takes advantage of an imbalance of power to coerce, manipulate or deceive a child or young person under the age of 18 into sexual activity (a) in exchange for something the victim needs or wants, and/or (b) for the financial advantage or increased status of the perpetrator or facilitator. The victim may have been sexually exploited even if the sexual activity appears consensual. Child sexual exploitation does not always involve physical contact; it can also occur through the use of technology.

Indicators of child sexual exploitation may include:

- Acquisition of money, clothes, mobile phones, etc. without plausible explanation;
- Gang-association and/or isolation from peers/social networks;
- Exclusion or unexplained absences from school, college or work;
- Leaving home/care without explanation and persistently going missing or returning late;
- Excessive receipt of texts/phone calls;
- Returning home under the influence of drugs/alcohol;
- Inappropriate sexualised behaviour for age/sexually transmitted infections;
- Evidence of/suspicions of physical or sexual assault;
- Relationships with controlling or significantly older individuals or groups;
- Multiple callers (unknown adults or peers);
- Frequenting areas known for sex work;
- Concerning use of internet or other social media;

- Increasing secretiveness around behaviours; and
- Self-harm or significant changes in emotional well-being.

Potential vulnerabilities include:

Although the following vulnerabilities increase the risk of child sexual exploitation, it must be remembered that not all children with these indicators will be exploited. Child sexual exploitation can occur without any of these issues.

- Having a prior experience of neglect, physical and/or sexual abuse;
- Lack of a safe/stable home environment, now or in the past (domestic abuse or parental substance misuse, mental health issues or criminality, for example);
- Recent bereavement or loss;
- Social isolation or social difficulties;
- Absence of a safe environment to explore sexuality;
- Economic vulnerability;
- Homelessness or insecure accommodation status;
- Connections with other children and young people who are being sexually exploited;
- Family members or other connections involved in adult sex work;
- Having a physical or learning disability;
- Being in care (particularly those in residential care and those with interrupted care histories); and
- Sexual identity.

More information can be found in:

Child sexual exploitation: Definition and a guide for practitioners (DfE 2017)

Information about Child Criminal Exploitation can be found in KCSIE (2023) page 142.

CCE occurs where an individual or group takes advantage of an imbalance of power to coerce, control, manipulate or deceive a child into any criminal activity (a) in exchange for something the victim needs or wants, and/or (b) for the financial or other advantage of the perpetrator or facilitator and/or (c) through violence or the threat of violence.

The victim may have been criminally exploited even if the activity appears consensual. CCE does not always involve physical contact; it can also occur through the use of technology.

Some of the following can be indicators of CCE:

- children who appear with unexplained gifts or new possessions;
- children who associate with other young people involved in exploitation;
- children who suffer from changes in emotional well-being;
- children who misuse drugs and alcohol;
- children who go missing for periods of time or regularly come home late; and

- children who regularly miss school or education or do not take part in education.

County Lines' is:

County lines is a term used to describe gangs and organised criminal networks involved in exporting illegal drugs (primarily crack cocaine and heroin) into one or more importing areas [within the UK], using dedicated mobile phone lines or other form of "deal line".'

Exploitation is an integral part of the county lines offending model with children and vulnerable adults exploited to move [and store] drugs and money. Offenders will often use coercion, intimidation, violence (including sexual violence) and weapons to ensure compliance of victims.

Children can easily become trapped by this type of exploitation as county lines gangs create drug debts and can threaten serious violence and kidnap towards victims (and their families) if they attempt to leave the county lines network.

See KCSIE (2023) 143.

Domestic Abuse

In April 2021, the Domestic Abuse Act 2021 received Royal Assent and introduced a statutory definition for the first time.

Definition

The Domestic Abuse Act 2021 (Part 1) defines domestic abuse as any of the following behaviours, either as a pattern of behaviour, or as a single incident, between two people over the age of 16, who are 'personally connected' to each other:

- (a) physical or sexual abuse;
- (b) violent or threatening behaviour;
- (c) controlling or coercive behaviour;
- (d) economic abuse (adverse effect of the victim to acquire, use or maintain money or other property; or obtain goods or services); and
- (e) psychological, emotional or other abuse.

People are 'personally connected' when they are, or have been married to each other or civil partners; or have agreed to marry or become civil partners. If the two people have been in an intimate relationship with each other, have shared parental responsibility for the same child, or they are relatives.

The definition of Domestic Abuse applies to children if they see or hear, or experience the effects of, the abuse; and they are related to the abusive person.

(The definition can be found here: <https://www.legislation.gov.uk/ukpga/2021/17/part/1/enacted>)

As outlined in KCSIE 2023 (paragraph 43) Domestic Abuse can encompass a wide range of behaviours and may be a single incident or a pattern of incidents. That abuse can be, but is not limited to, psychological, physical, sexual, financial or emotional. Children can be victims of domestic abuse. They

may see, hear, or experience the effects of abuse at home and/or suffer domestic abuse in their own intimate relationships (teenage relationship abuse). All of which can have a detrimental and long-term impact on their health, well-being, development, and ability to learn.

The National Domestic Abuse helpline can be called free of charge and in confidence, 24 hours a day on 0808 2000 247.

Operation Encompass is a national operation where local police forces notify when the police are called to an incident to domestic abuse. Avon and Somerset have their own version of this and will notify education settings whenever they have responded to a domestic abuse incident. This will enable the education setting to take proactive action and reasonable adjustments in relation to behaviour management and achieving positive educational outcomes.

Under the current information sharing protocol, the education setting **is not permitted** in sharing this information without seeking consent from Avon and Somerset police in case this can put a victim and learners at further risk of harm. The only exception to this when information is shared with new education setting (part of statutory duties in relation to transfer of the Safeguarding/ Child Protection file, Keeping Children Safe in Education). Additional instructions around this are sent out with every single notification.

- Education settings must have signed up to a Police Safeguarding Notification Briefing to receive these.
- Each setting should have at least 2 members of trained staff able to receive and act upon these notifications.
- Each setting should promote an open culture of safeguarding to enable learners and families to disclose and feel safe to talk about their experiences and what support may be required.

Female Genital Mutilation

Female genital mutilation refers to procedures that intentionally alter or cause injury to the female genital organs for non-medical reasons. The practice is illegal in the UK.

FGM typically takes place between birth and around 15 years old; however, it is believed that the majority of cases happen between the ages of 5 and 8.

Risk factors for FGM include:

- low level of integration into UK society
- mother or a sister who has undergone FGM
- girls who are withdrawn from PSHE
- visiting female elder from the country of origin
- being taken on a long holiday to the country of origin
- talk about a 'special' procedure to become a woman

Symptoms of FGM

FGM may be likely if there is a visiting female elder, there is talk of a special procedure or celebration to become a woman, or parents wish to take their daughter out-of-school to visit an 'at-risk' country

(especially before the summer holidays), or parents who wish to withdraw their children from learning about FGM. Staff should not assume that FGM only happens outside the UK.

Indications that FGM may have already taken place may include:

- difficulty walking, sitting or standing and may even look uncomfortable.
- spending longer than normal in the bathroom or toilet due to difficulties urinating.
- spending long periods of time away from a classroom during the day with bladder or menstrual problems.
- frequent urinary, menstrual or stomach problems.
- prolonged or repeated absences from school or college, especially with noticeable behaviour changes (e.g. withdrawal or depression) on the girl's return
- reluctance to undergo normal medical examinations.
- confiding in a professional without being explicit about the problem due to embarrassment or fear.
- talking about pain or discomfort between her legs

Mandatory reporting duty: [Click here for government guidance](#)

This is a legal duty for all professionals undertaking teaching work to report known cases of FGM to the police via 101. This is when they:

1. are informed by a girl under 18 that an act of FGM has been carried out on her; or
2. observe physical signs which appear to show that an act of FGM has been carried out on

These cases must be referred to the DSL who will support them to carry out their duty. It is also advised any referrals made to the police under the mandatory reporting duty is followed up with children's social care so an assessment of need and support is concurrently considered.

Travel:

National guidance has highlighted going on holiday to a risk affected country is cause for concern, local guidance has been developed to prevent discriminatory action against families from risk affected communities.

- Families are encouraged to notify the education setting when they are looking to travel during term time dates.
- This will prompt a conversation with the DSL/ specialist trained member of staff to discuss and explain what FGM is in that; it is significantly harmful and illegal to practice this.
- The setting will complete an [FGM Referral Risk assessment](#) (available on the [Keeping Bristol Safe Partnership website](#)) with the family to identify any support that the family may require in relation to FGM.
- Proportionate action is taken. Referrals to social care should NOT be automatically made – however should be made if there are high risk concerns identified from the FGM Referral Risk Assessment.
- These assessments should be saved onto the child's Safeguarding/Child Protection file to avoid duplication with new incidents of travel.

So-called 'Honour-based' abuse

So-called 'honour-based' abuse (HBA) encompasses crimes which have been committed to protect or defend the honour of the family and/or the community, including Female Genital Mutilation (FGM), forced

marriage, and practices such as breast ironing. All forms of so called HBA are abuse (regardless of the motivation) and should be handled and escalated as such.

Where staff are concerned that a child might be at risk of HBA, they must contact the Designated Safeguarding Lead as a matter of urgency.

Online Safety

- **Annex D of Keeping Children Safe in Education highlights additional actions schools should take to keep learners safe online.**
- For concerns around individual cases where a child has been harmed through online mediums, advice and guidance can be made through the **Professional Online Safeguarding Helpline**, T: 0344 381 4772, E: helpline@saferinternet.org.uk
- Where there have been established cases of online abuse or grooming, the school settings should alert - **Child Exploitation and Online Protection command (CEOPS)**
<https://www.ceop.police.uk/ceop-reporting/>

Mental health – [linked to section within main body of this policy](#)

Child on child Abuse - [linked to section within main body of this policy](#).

Serious Youth Violence

To be read in conjunction with the above section around Child Criminal Exploitation. There has been local guidance issued on the issue of [‘Offensive Weapons in Education Settings’](#).

It is important to note that should a weapon be used or there is threat of use, the police should be called immediately.

- The same day a weapon is found Safer Options should be called for a multi-disciplinary assessment of risk.
- Whilst it is acknowledged that the decision to exclude remains with the Headteacher/principal it is recommended that consultation with the Safer Options Education Inclusion Manager is made so as not to further put the child at further risk of harm if they are excluded.
- Alternatives to exclusions should be considered first in recognition that by doing so a learner it may be at further risk of harm out in the community.
- Police will be notified through the multi-agency discussion held at the ‘Out of Court Disposals Panel’ to prevent students unnecessarily getting a criminal record.

Preventing Radicalisation - The Prevent duty

All schools and colleges are subject to a duty under section 26 of the Counter-Terrorism and Security Act 2015 (the CTSA 2015), in the exercise of their functions, to have “due regard 109 to the need to prevent people from being drawn into terrorism”.¹¹⁰ This duty is known as the Prevent duty.

The Prevent duty should be seen as part of schools' and colleges' wider safeguarding obligations. Designated safeguarding leads and other senior leaders should familiarise themselves with the revised [Prevent duty guidance: for England and Wales](#), especially paragraphs 57-76, which are specifically concerned with schools (and also covers childcare).

The guidance is set out in terms of four general themes:

- risk assessment,
- working in partnership,
- staff training, and
- IT policies.

As part of the Counter Terrorism and Security Act 2015, schools have a duty to 'prevent people being drawn into terrorism'. This has become known as the 'Prevent Duty'.

Where staff are concerned that children and young people are developing extremist views or show signs of becoming radicalized, they should discuss this with the Designated Safeguarding Lead.

The Designated Safeguarding Lead has received training about the Prevent Duty and tackling extremism and is able to support staff with any concerns they may have.

We use the curriculum to ensure that children and young people understand how people with extreme views share these with others, especially using the internet.

Staff should be alert to changes in children's behaviour, which could indicate that they may be in need of help or protection. Staff should use their judgement in identifying children who might be at risk of radicalisation and act proportionately which may include the designated safeguarding lead (or deputy) making a Prevent referral.

We are committed to ensuring that our pupils are offered a broad and balanced curriculum that aims to prepare them for life in modern Britain. Teaching the school's core values alongside the fundamental British Values supports quality teaching and learning, whilst making a positive contribution to the development of a fair, just and civil society.

Recognising Extremism

Early indicators of radicalisation or extremism may include:

- showing sympathy for extremist causes
- glorifying violence, especially to other faiths or cultures
- making remarks or comments about being at extremist events or rallies outside school
- evidence of possessing illegal or extremist literature
- advocating messages similar to illegal organisations or other extremist groups
- out of character changes in dress, behaviour and peer relationships (but there are also very powerful narratives, programmes and networks that young people can come across online so involvement with particular groups may not be apparent.)
- secretive behaviour
- online searches or sharing extremist messages or social profiles
- intolerance of difference, including faith, culture, gender, race or sexuality

- graffiti, art work or writing that displays extremist themes
- attempts to impose extremist views or practices on others
- verbalising anti-Western or anti-British views
- advocating violence towards others

Private Fostering

A private fostering arrangement is one that is made privately (without the involvement of a local authority) for the care of a child under the age of 16 years (under 18, if disabled) by someone other than a parent or close relative, in their own home, with the intention that it should last for 28 days or more.

A close family relative is defined as a 'grandparent, brother, sister, uncle or aunt' and includes half-siblings and step-parents; it does not include great-aunts or uncles, great grandparents or cousins.

Parents and private foster carers both have a legal duty to inform the relevant local authority at least six weeks before the arrangement is due to start; not to do so is a criminal offence.

Whilst most privately fostered children are appropriately supported and looked after, they are a potentially vulnerable group who should be monitored by the local authority, particularly when the child has come from another country. In some cases privately fostered children are affected by abuse and neglect, or be involved in trafficking, child sexual exploitation or modern-day slavery.

Schools have a mandatory duty to report to the local authority where they are aware or suspect that a child is subject to a private fostering arrangement. Although schools have a duty to inform the local authority, there is no duty for anyone, including the private foster carer or social workers to inform the school. However, it should be clear to the school who has parental responsibility.

School staff should notify the designated safeguarding lead when they become aware of private fostering arrangements. The designated safeguarding lead will speak to the family of the child involved to check that they are aware of their duty to inform the LA. The school itself has a duty to inform the local authority of the private fostering arrangements.

On admission to a Trust in Learning Academies school, we will take steps to verify the relationship of the adults to the child who is being registered.

Young Carers

A young carer is a person under 18 who regularly provides emotional and/or practical support and assistance for a family member who is disabled, physically or mentally unwell or who misuses substances.

The setting will support learners who are young carers to appropriate support. To find out what is available locally visit the Bristol City Council Website - <https://www.bristol.gov.uk/social-care-health/support-for-young-carers>

The Carers Support Centre can undertake an assessment of need and provide bespoke support. <https://www.carerssupportcentre.org.uk/young-carers/making-a-referral/>



Appendix F Flow chart for Raising Concerns About a Child

