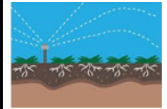


Enquiry Knowledge Organiser Year 4

Talk and write like a Geographer



- **mountain** - an elevated portion of the Earth's crust
- **river** - a large natural stream of water flowing in a channel to the sea, a lake, or another river
- **village** - a clustered human settlement or community
- **rural** - geographic area that is located outside towns and cities
- **settlement** - a community of people living in a particular place
- **irrigation** - the supply of water to land or crops
- **population** - the number of people in a single area



As geographers you will learn **topography** - the study of the forms and features of land surfaces

Talk and write like a Historian



- **civilisation** - the ability of people to live together harmoniously in cities, in social groupings
- **ancient** - belonging to the very distant past and no longer in existence
- **contrast** - the difference or degree of difference between things having similar or comparable natures



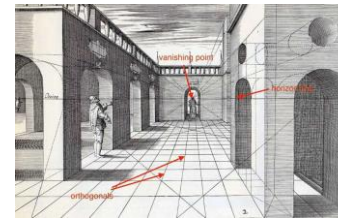
Can you name any similarities between Bristol and Egypt? Why are both settlements close to the river?

Talk and write like an Artist



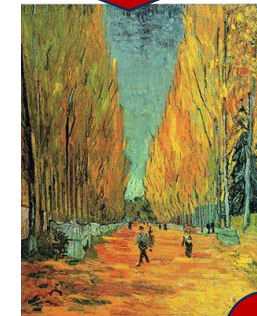
- **perspective** - a technique to create the linear illusion of depth
- **horizon** - the line at which the earth's surface and the sky appear to meet
- **vanishing point** - the point at which receding parallel lines, when viewed in perspective, seem to converge

What is the technique used by artists to create an illusion of depth? Can you name an artist who uses such techniques?



The Architect Filippo Brunelleschi Devised Linear Perspective in the 16th Century.

Famous artist Vincent Van Gogh (1853-1890) used linear perspective

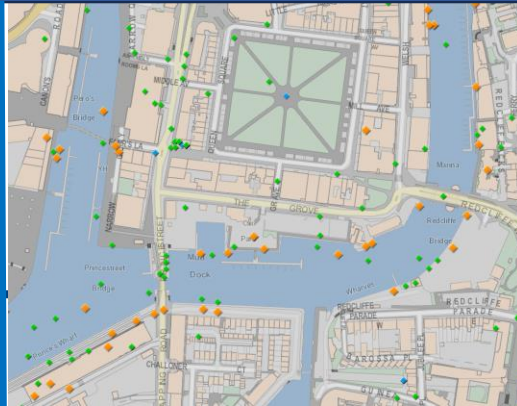
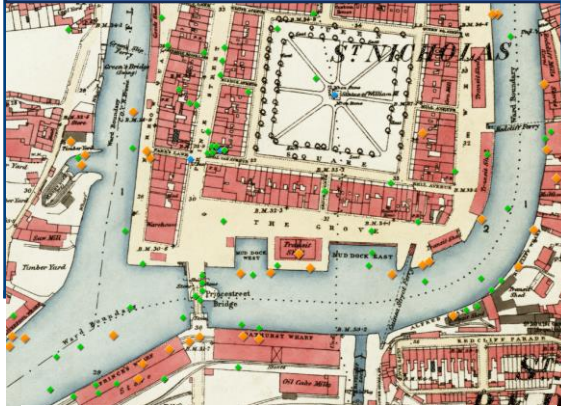


David Hockney is a contemporary artist, who also uses linear perspective in his artwork



Overview Y4 - Why do we live here?

Bristol – 1960 and 2000



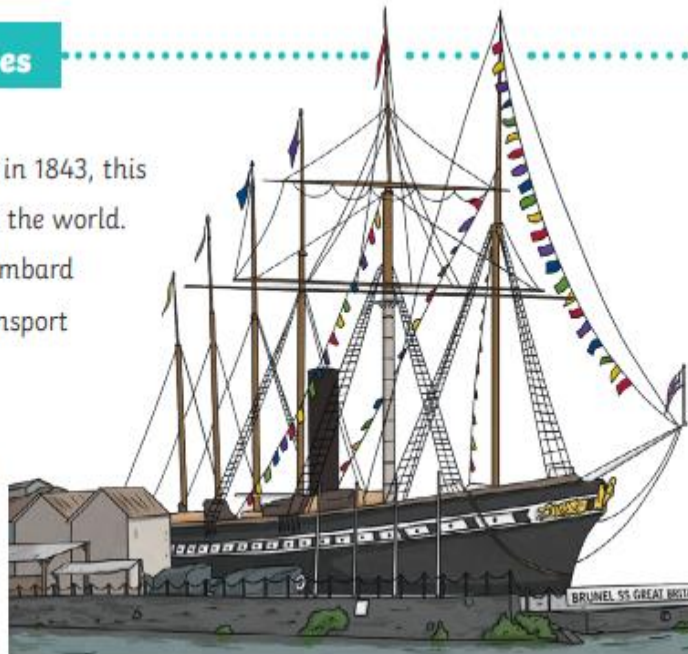
Bristol is both a city and a county. It falls between the counties of Gloucestershire to the north and Somerset to the south. It lies on the river Avon and the river Frome and is located near to the Bristol Channel, a tidal estuary to the south-west of the UK.



Significant Places

The SS Great Britain

When it was launched in 1843, this was the largest ship in the world. It was designed by Isambard Kingdom Brunel to transport passengers across the Atlantic Ocean. It is now a popular tourist attraction, alongside two museums and a dockyard.



Significant Places

Clifton Suspension Bridge

Also designed by Brunel, this is one of the oldest surviving suspension bridges in the world and crosses the River Avon. It took 33 years to build and was completed in 1864.



What knowledge do I already have?

- I understand and can identify key physical features of a landscape: Beach, cliff, coast, forest, hill, mountain, sea, ocean.
- I can explain how soil is formed, and how this helps vegetation.
- I can explain the key physical features of a river.
- I understand and can explain the different seasons of the weather.
- I understand and can explain the key human features of a city, town, village, factory, farm, house.
- I can explain where the Antarctic/Arctic is on a map and explain the weather climate.
- I understand and can explain the difference between physical and human features of volcanoes/ earthquakes.
- I can explain how to use different atlases, maps, and produce fieldwork explaining my work.