

NURSERY CLASS PARENT HANDBOOK

2023 – 2024

WELCOME FROM THE HEADTEACHER

DEAR PARENT/ CARER,

Thank you for choosing Bridge Learning Campus as the Nursery setting for your child. We are looking forward to getting to know you all, as a family, as they begin their learning journey with us. Starting at BLC is an extremely special time, especially as there is the opportunity for them to stay with us until they take their GCSE examinations at 16 years old.

IN THIS HANDBOOK, WE AIM TO...

- Share useful information about what to expect in Nursery.
- Answer some frequently asked questions.
- Provide support for your family at this transition time.

The information included is correct during the Summer Term of 2023. If there are any changes, we will keep you informed via the email address you have supplied us with.

We look forward to meeting you and working in partnership with you during your child's learning journey at Bridge Learning Campus.

Please do not hesitate to contact the school with any questions.



MR R MAULE
Headmaster

WELCOME TO RAINBOW CLASS

For September, our teacher in Rainbow Class is Ms Caffrey. Working alongside here within Nursery will be Mrs Varetska, Ms Thorne, Ms Rushton and Miss Thorne. We use other staff to support and provide intervention in the Nursery as required.



HOW WILL WE BE LEARNING?

In Nursery we provide a range of exciting and stimulating learning experiences, both within and outside the classroom. The children explore their learning through practical opportunities in their free play as well as through teacher led sessions.

The Curriculum in Nursery covers all the areas of learning within the Early Years and Foundation Stage, including early reading skills, early writing skills and early maths skills. We also follow an Enquiry based curriculum where children learn the skills involved in a variety of 'States of Being', for example, Being an Engineer.

The learning in Nursery is a solid foundation for children and staff to build on as they enter their Reception year at school, supporting the framework changes introduced in September 2022. We use Class Dojo to share class stories and home learning. We will also be asking you to contribute to this.

Throughout the year you will be invited to discuss your child's progress and to hear more about our approach to learning. But if you have queries, please make an appointment or telephone call to discuss them with a member of the Nursery team.

Also look out for our stay and play sessions where you will be invited into the classroom to learn with your child when we are able to.



INTRODUCTION

Our aim is to complete home visits for children starting in Nursery. A time will be arranged for you and the Nursery teacher will share this information when arrangements have been confirmed. If any changes occur we will aim to keep you informed as soon as we can. Settling

into Nursery is really important, and each child has an individual induction period.

When your child starts, you will need to be available for a settling-in period. It is also expected for successful transition, that your child is toilet trained and able to go to the toilet by themselves. If you have any questions about this please contact the school.

NURSERY LEARNING EXPECTATIONS

AT THE BEGINNING OF NURSERY:

- For children to be as independent as possible.
- To go to the toilet by themselves.
- To dress and undress by themselves, e.g. put their coat on.
- To eat by themselves.

AT THE END OF NURSERY:

- To recognise their name.
- To write their name with a name card
- To count to 10 and beyond.



HOW CAN YOU HELP YOUR CHILD MAKE PROGRESS DURING THEIR NURSERY YEAR?

LEARNING IS FUN!

THERE ARE SO MANY WAYS THAT YOU CAN SUPPORT YOUR CHILD'S LEARNING AT HOME, INCLUDING:

- Looking for numbers and shapes in the environment e.g. at the bus stop, on front doors, in the park etc.
- Practising counting with your child by counting steps, knives and forks, fingers and toes, candles on a cake etc.
- Talking about things you see when you are out and about. Look for similarities and differences. Make links with things when you spot them. Talk about everything!
- Encouraging your child to talk in full sentences and ask questions that do not need just a yes or no answer.
- Sharing books and stories together, talk about the pictures. Tell your child the stories you heard when you were little – encourage listening and attention span.
- Developing fine motor skills by cutting, using playdough, threading beads etc
- Encouraging mark making, shopping lists, writing in cards, drawing pictures etc.
- Singing number rhymes and other songs together.
- Providing opportunities to play with other children, within the guidelines set out by the Government.
- Spending 15 minutes each day supporting your child with their learning will have a huge impact on your child's development and the amount of progress they make at school.





EVERYDAY INFORMATION

UNIFORMS:

- Tailored black trousers (not tight at the ankle, not skinny, denim or leggings style).
- Knee length black skirt or knee length black tailored shorts.
- Plain white (or green) polo shirt with BLC logo on the chest.
- Green sweater with BLC logo.
- Grey or black pinafore dress.
- Green gingham dresses (summer term only).
- White, grey, black or green socks/tights.
- Black polishable shoes only (no trainers or visible logo).

- In Nursery and reception only – green jogging bottoms.
- Book Bag - all students require a book bag.

PROVISIONS:

WE WILL PROVIDE:

- Fruit for snack time and a carton or glass of milk.

YOU SHOULD PROVIDE

- Water as a drink.
- Velcro shoes.





THINGS YOU NEED TO KNOW:

DROPPING OFF AND PICKING UP YOUR CHILD

Please use the Nursery entrance for drop off and pick up.

APPOINTMENTS

We ask that you try, as much as possible, to book any dentist or doctors appointment after the school day.

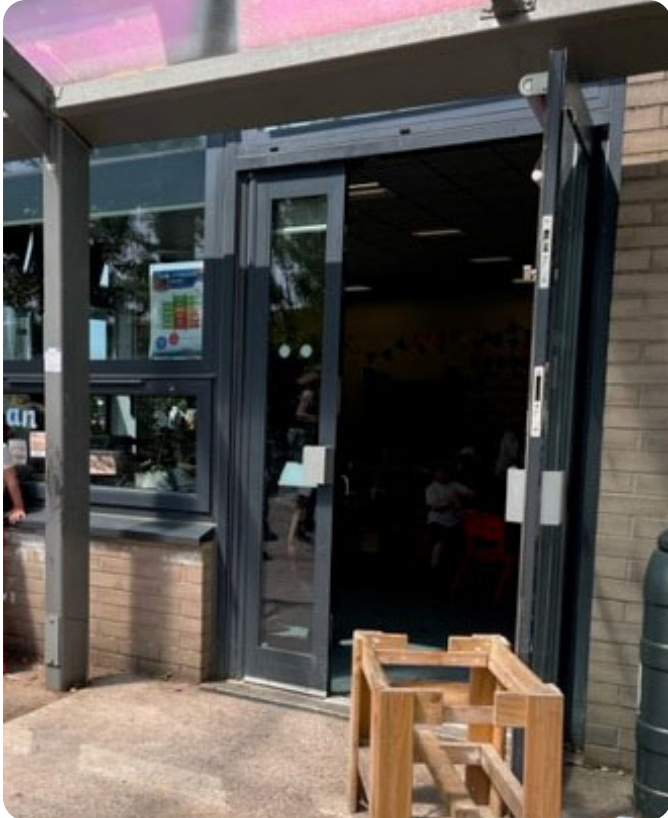
Alternative adults picking up – If a different adult is picking your child up please inform the class teacher in the morning or phone the school.

ABSENCE

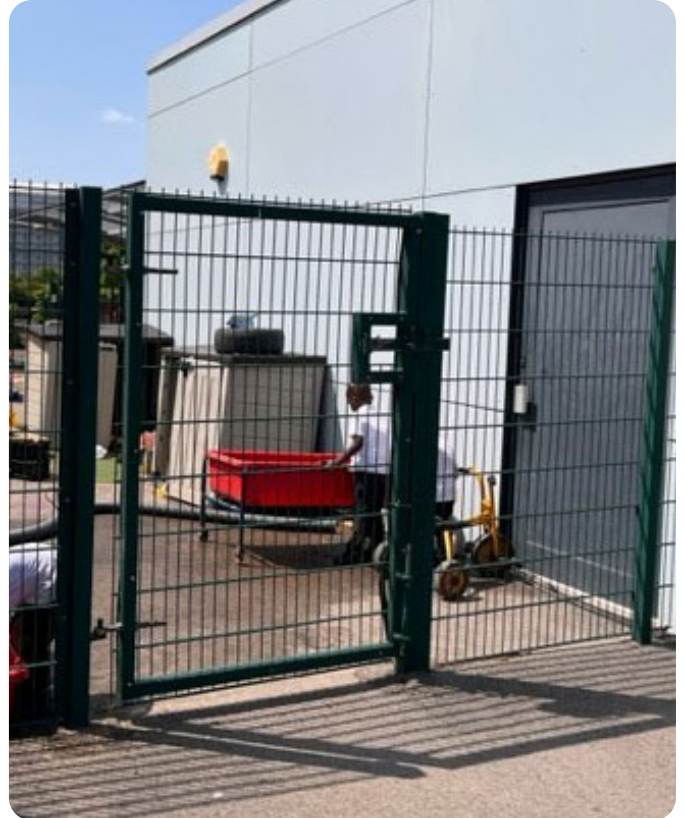
We expect good regular attendance. But, if your child is unwell staying at home is best. Illnesses can spread very quickly in school! Please contact the office every day that your child is absent, giving the reason your child is away. If your child has severe diarrhoea and sickness please do not bring them to school for at least 48 hours after it stops, after which time they should no longer be contagious. If your child has been sick or had diarrhoea only once, then a period of 24h hours before returning should be followed.

LATE ARRIVALS

If you arrive late (after 8.35am) please come directly to the main office to sign in the late book.



NURSERY CLASSROOM DOOR



REAR GATE (PRIMARY)



BEHAVIOUR IN SCHOOL

Bridge Learning Campus is a unique all-through school where children of all ages have the right to learn, all teachers the right to teach, and everyone in school the right to feel safe. We therefore have a collective and individual responsibility to respect others, ourselves, and the environment. Our fundamental principle is an unconditional positive regard for others. This, combined with rights, responsibilities and routines will produce good behaviour where everyone is able to work effectively and happily. We are an inclusive school and this policy strives to ensure inclusion is at the heart of everything we do. In order to maintain good order and appropriate behaviour, we recognize the importance of rewards and sanctions. Students' positive behaviour and participation needs to be acknowledged and rewarded; poor behaviour – especially that which interferes with others' learning or that which endangers others – will be discussed between home and school and a way forward found.

LUNCHES AND SNACKS:

In Nursery, we will provide your child with a piece of fruit and either a glass of water or milk each snack time. This is used as a social situation and is a brilliant way for the children to apply the learning they have been doing.

Packed lunch can be sent in with your child daily or if you wish to buy lunch, we use the cashless system 'Arbor Pay' to buy lunch from our catering company. You will need to ensure your Arbor Pay account has sufficient funds if you are paying for your child's lunches. We will not be able to

provide a lunch to your child if they do not have money on their account. If your child is entitled to a free school meal please see the office and ensure a Pupil Premium Checker form is completed and returned to us. We will carry out the check for you by liaising with the Local Authority. Our menu is available on our website and your child's teacher will have more information about daily meal options.

WHAT YOUR CHILD NEEDS TO BRING TO NURSERY:

- Water bottle.
- Lunchbox- please ensure your child has a healthy variety of foods.
- Spare clothes.
- Wellies.

Please ensure everything is labelled clearly with your child's name.

COMMUNICATION

Any events or key information will be written on the classroom whiteboard for you to see at drop off and pick up time.

We also keep a diary by the door to write in any changes to who is collecting your child at the end of the day or their session. We will only let your child be collected by an adult that is known to us. If you are going to be late, please telephone us so that we can let your child know.

Please keep phone numbers and your address up to date in case we need to contact you during the day regarding your child.



ARBOR

We use Arbor as our school MIS & communication system. We ask parents to sign up to the Arbor Parent Portal where you can view e-mails, SMS and In-App messages and be kept up to date about your child's life at school.

The Parent Portal works on Google Chrome (computer or laptop) and you can download the Arbor App from the App Store or Google Play Store on your phone (Android 5.0; iOS 10.0 and upwards). Wait for your welcome email from us telling you Arbor is ready - you won't be able to log in before. For help with logging in please contact the school office. www.arbor-education.com

CLASS DOJO

Throughout the Primary school we use an online platform called 'Class Dojo.' This platform allows us to share videos, provide

information and message families and for families to message teachers back. It is a very effective way to create a virtual, learning community.

To either start, or to continue your child's BLC journey. It is our intention to provide a variety of transition opportunities for your child that can be accessed through the platform.

Class Dojo is a secure platform, needing a password to access the content available. Each parent and child will have their own personal computer-generated password, which they will need to use to access the community.

You will either be able to access the site via the website www.classdojo.com or you can download the app which is available for Apple and Android devices.

You will receive a separate letter to sign up for this.





HEALTH AND SAFETY

Please make sure we have up to date medical and contact detail information on file.

JEWELLERY

Stud earrings only should be worn, as anything else can catch easily and be dangerous. All other jewellery is best left at home as we can't be responsible for anything that is mislaid.

SHOES

Sensible shoes are required for Nursery (this includes closed heeled sandals in

the summer). We do not allow flip-flops or open heeled sandals which can cause children to trip over.

SUN CREAM IN SUNNY WEATHER

Please apply sun cream before they come to school. Children may bring in sun cream but will have to apply it themselves; staff cannot help apply sun cream.

We also strongly recommend children bring in sun hats when the weather is hot.

No personal toys allowed in school - we thank you for your support.





TIMINGS OF THE SCHOOL DAY:

Monday - Friday 8:30am - 3:00pm

Part time mornings 8:30am - 11:30am

Part time afternoons 12.00noon - 3.00pm

TERM DATES 2023/24:

TERM 1:

Tuesday 5th September 2023 - Friday 20th October 2023

Term 1 will include individual transition dates, which will be confirmed by letter and a conversation with the class teacher

TERM 2:

Tuesday 31st October 2023 - Friday 15th December 2023

TERM 3:

Wednesday 3rd January 2024 - Friday 9th February 2024

TERM 4:

Monday 19th February 2024 - Thursday 28th March 2024

TERM 5:

Tuesday 16th April 2024 - Friday 24th May 2024

TERM 6:

Monday 3rd June 2024 - Friday 19th July 2024

INSET DAYS:

- Friday 1st September 2023
- Monday 4th September 2023
- Monday 30th October 2023
- Tuesday 2nd January 2024
- Monday 15th April 2024
- Friday 28th June 2024
- Monday 22nd July 2024
- Tuesday 23rd July 2024





CONTACT INFORMATION

ADDRESS:

Bridge Learning Campus William
Jessop way Hartcliffe,
Bristol, BS13 0RL

Special Educational Needs Team

SEN@blc.school

Wellbeing concerns

wellbeing@blc.school

MAIN TELEPHONE CONTACTS:

Primary 0117 9030356
Secondary 0117 3534472

Admissions

join@blc.school

GENERAL EMAIL:

enquiries@blc.school Other School

SOCIAL MEDIA:

Twitter

@Bristol_BLC

Instagram

@bridgelearningcampus

Facebook

Bridge Learning Campus

CONTACTS:

Attendance Team

attendance@blc.school





Bridge Learning
Campus